

# \$3,200,000 - 140 Clarke Road, London East (east I)

MLS® #X8186496

**\$3,200,000**

0 Bedroom, 0.00 Bathroom, 6,649 sqft

Vacant Land on 137.99 Acres

East I, London East (east I), Ontario

Desirable location! East London with growing residential and commercial activity nearby. Great roadside easy access with huge road frontage ( lots of daily traffic ) ( main road visibility ) Near all necessary amenities like bus route , shopping , and many other businesses. Long term usage as automotive repair and sales since 1960s ( many suppliers and auto wreckers very near )Zoning for auto sales and repair amongst many other uses. Easy access to 401 (5 minutes). Large secure fenced compound. Option for \$250,000. down and lease all buildings, car lots, hoists, and loaner cars for \$25,000./month. (id:6289)

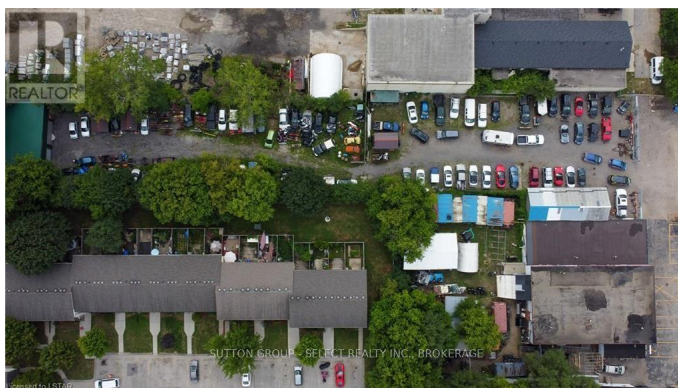
## Essential Information

Listing #	X8186496
Price	\$3,200,000
Bathrooms	0.00
Square Footage	6,649
Acres	137.99
Type	Vacant Land

## Community Information

Address	140 Clarke Road
Subdivision	East I
City	London East (east I)
Province	Ontario
Postal Code	N5W5E1

## Amenities



Amenities	Highway
Features	Irregular lot size
Parking	Garage
# of Garages	1

## Interior

Heating	Natural gas Forced air
Cooling	Fully air conditioned

## Listing Details

Listing Office SUTTON GROUP - SELECT REALTY



The trademarks MLS®, Multiple Listing Service® and the associated logos are owned by The Canadian Real Estate Association (CREA) and identify the quality of services provided by real estate professionals who are members of CREA. REALTOR®. Member of CREA and more.

Listing information last updated on October 14th, 2025 at 11:46pm PDT