

\$3,250,000 - (car Wash) - 493 Eliza Street, Wellington North (arthur)

MLS® #X6622810

\$3,250,000

0 Bedroom, 0.00 Bathroom, 14,018 sqft
Retail on 0.00 Acres

Arthur, Wellington North (arthur), Ontario

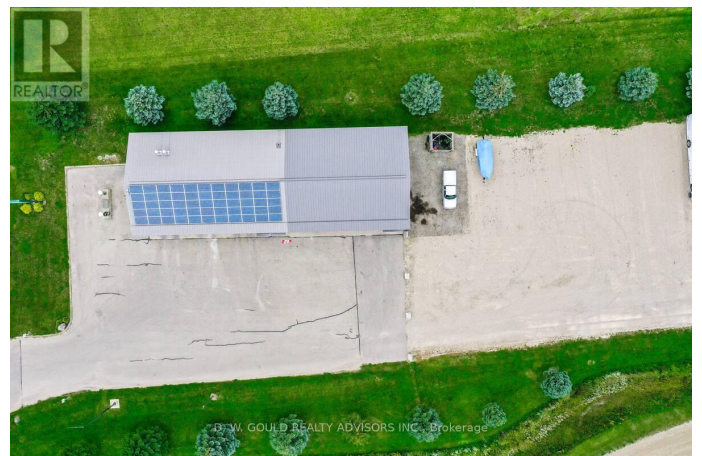
This property offers County Road exposure and features a total of +/- 14,018 sf of building area on +/- 2.28 acres, which includes a +/- 9,800 SF commercial/industrial warehouse with three drive-in doors and varying clear heights (12' 10" -19' 4"), a +/- 2,318 sf car wash with three bays and office, and a 1,900 SF shop with two Drive-in doors. Shop could be used for various automotive or retail uses. Tint shop, detailing, etc. The site includes excess land and a gravelled outdoor storage area. Zoned C2 (Highway Commercial) at the front with a variety of permitted uses & M1 (Industrial) at the rear, allowing for outside storage with select uses. Tax amount is estimated from interim 2025 tax bill (TBV). VTB available.

*Legal Description

Continued: WELLINGTON NORTH.

****EXTRAS**** Please Review Available

Marketing Materials Before Booking A Showing. Please Do Not Walk The Property Without An Appointment. (id:6289)



Essential Information

Listing #	X6622810
Price	\$3,250,000
Bathrooms	0.00

Square Footage	14,018
Acres	0.00
Type	Retail

Community Information

Address	(car Wash) - 493 Eliza Street
Subdivision	Arthur
City	Wellington North (arthur)
Province	Ontario
Postal Code	N0G1A0

Amenities

Amenities	Highway
-----------	---------

Interior

Heating	Natural gas Hot water radiator heat
---------	-------------------------------------

Listing Details

Listing Office	D. W. GOULD REALTY ADVISORS INC.
----------------	----------------------------------



The trademarks MLS®, Multiple Listing Service® and the associated logos are owned by The Canadian Real Estate Association (CREA) and identify the quality of services provided by real estate professionals who are members of CREA. REALTOR®. Member of CREA and more.

Listing information last updated on October 12th, 2025 at 3:18pm PDT