

\$384,900 - 113 - 2570 Southvale Crescent, Ottawa

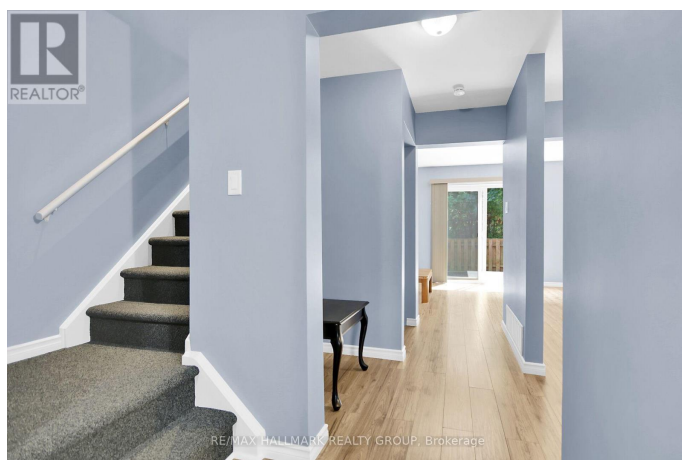
MLS® #X12458653

\$384,900

3 Bedroom, 2.00 Bathroom,
Single Family

3705 - Sheffield Glen/Industrial Park, Ottawa,
Ontario

Welcome to this beautifully upgraded and meticulously maintained townhome a rare opportunity to own a property where every inch has been cared for with precision and pride by a professional contractor. Every detail has been thoughtfully improved, with approximately \$70,000 in upgrades and renovations that truly set this home apart. Inside, you'll find a warm, inviting layout that blends craftsmanship and comfort. The kitchen has been tastefully updated with beautiful finishes. All bathrooms are fully renovated. Durable flooring runs throughout, creating a clean, cohesive flow. The attention to detail is unmatched the floors, stairs, and beams have all been professionally leveled to ensure long-lasting stability. Enjoy smooth NO POPCORN CEILINGS, adds a clean, contemporary look. Step into your private, professionally built backyard oasis, complete with a brand-new premium wood deck the perfect setting for morning coffee, summer BBQs, or evening gatherings with friends. This turnkey home is ideally located in a vibrant neighborhood just minutes from schools, St. Laurent Shopping Centre, caf  s, restaurants, the public library, CHEO, The Ottawa Hospital, and Hwy 417 - offering convenient city living with a warm residential feel. Move in with confidence knowing every inch has been cared for with expert precision. Now ready for its next chapter, this property offers peace of mind and effortless living. One



parking space is included (additional parking may be available). Energy efficiency adds to the appeal: Hydro averages about \$52/month, the gas furnace (2019) is in great shape - the owner receives annual rebates of approx. \$500-\$650 on Gas bills. Condo fees cover water, sewer, building insurance, lawn care, and snow/garbage removal - giving you peace of mind, perfect for busy professionals or downsizers. Don't miss this unique opportunity to own an affordable property in an ideal location just minutes from Downtown Ottawa!
(id:6289)

Essential Information

Listing #	X12458653
Price	\$384,900
Bedrooms	3
Bathrooms	2.00
Half Baths	1
Type	Single Family
Sub-Type	Condominium/Strata

Community Information

Address	113 - 2570 Southvale Crescent
Subdivision	3705 - Sheffield Glen/Industrial Park
City	Ottawa
Province	Ontario
Postal Code	K1B5B6

Amenities

Amenities	Park
Parking Spaces	1
Parking	No Garage

Interior

Appliances	Dryer, Hood Fan, Stove, Washer, Refrigerator
Heating	Natural gas Forced air
# of Stories	2

Exterior

Exterior	Stucco
Foundation	Concrete

Listing Details

Listing Office RE/MAX HALLMARK REALTY GROUP



The trademarks MLS®, Multiple Listing Service® and the associated logos are owned by The Canadian Real Estate Association (CREA) and identify the quality of services provided by real estate professionals who are members of CREA. REALTOR®. Member of CREA and more.

Listing information last updated on October 14th, 2025 at 8:01pm PDT