

\$949,000 - 713 Rutherford Side Road, Tay Valley

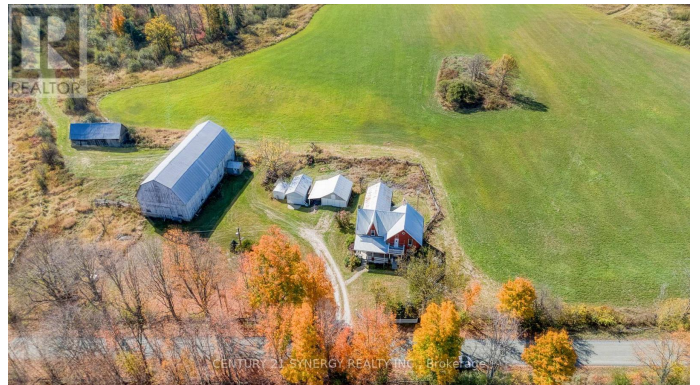
MLS® #X12457926

\$949,000

5 Bedroom, 2.00 Bathroom,
Agriculture on 0.00 Acres

906 - Bathurst/Burgess & Sherbrooke
(Bathurst) Twp, Tay Valley, Ontario

Welcome to your dream country retreat a beautifully updated 5-bedroom, 2-bathroom home set on over 100 acres of rolling pasture and mature forest, located just outside the vibrant town of Perth, Ontario. This exceptional property offers the perfect combination of rural charm, privacy, and modern comfort. The home has been fully renovated from top to bottom with new windows, updated plumbing and electrical, new appliances, and all major systems replaced including a high-efficiency furnace, hot water tank, and pressure pump. The spacious country eat-in kitchen is the heart of the home, complemented by a formal dining room perfect for entertaining and family gatherings. Offering plenty of room for family or guests, the layout includes five bedrooms and two full bathrooms, with bright, airy living spaces throughout. The basement has been completely updated and is dry and functional, providing excellent potential for additional living space, storage, or workshop use. Outside, soak in the tranquility from the expansive front porch the panoramic views of your private countryside are simply unmatched. The land is a beautiful mix of mature trees and open pasture, ideal for hobby farming, equestrian use, or recreation. A wide range of outbuildings provide incredible flexibility, including detached garages, a massive 40 x 90 barn, and several additional structures suitable for storage, livestock, or equipment. (id:6289)



Essential Information

Listing #	X12457926
Price	\$949,000
Bedrooms	5
Bathrooms	2.00
Half Baths	1
Acres	0.00
Type	Agriculture

Community Information

Address	713 Rutherford Side Road
Subdivision	906 - Bathurst/Burgess & Sherbrooke (Bathurst) Twp
City	Tay Valley
Province	Ontario
Postal Code	K7H3C9

Amenities

Utilities	Cable, Electricity, Wireless
Features	Lane, Carpet Free
Parking Spaces	24
Parking	Detached Garage, Garage
# of Garages	2
View	Valley view

Interior

Appliances	Water Heater, Hood Fan, Microwave, Stove, Refrigerator
# of Stories	2

Exterior

Exterior	Brick
Lot Description	4647 x 1015.3 FT 50 - 100 acres

Listing Details

Listing Office	CENTURY 21 SYNERGY REALTY INC.
----------------	--------------------------------



The trademarks MLS®, Multiple Listing Service® and the associated logos are owned by The Canadian Real Estate Association (CREA) and identify the quality of services provided by real estate professionals who are members of

CREA. REALTOR®. Member of CREA and more.
Listing information last updated on October 14th, 2025 at 6:31am PDT