

\$949,000 - 319 Berford Street, South Bruce Peninsula

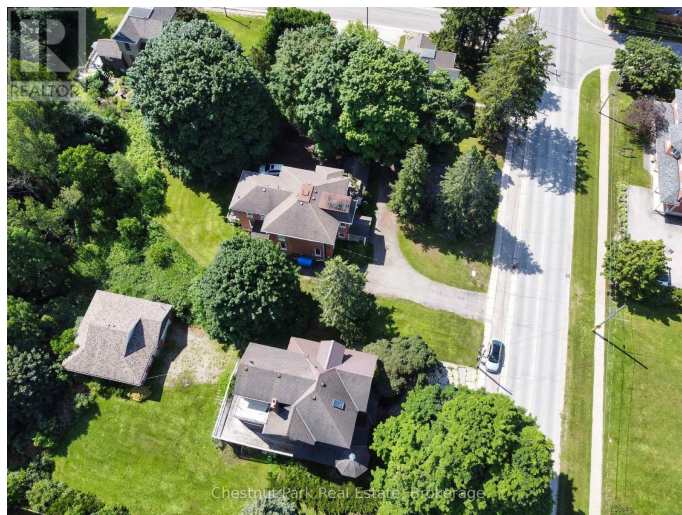
MLS® #X12457071

\$949,000

6 Bedroom, 6.00 Bathroom,
Multi-family on 0.00 Acres

South Bruce Peninsula, South Bruce
Peninsula, Ontario

Solid Brick two storey style 6 plex with a large lot, located in the downtown core of Wiarton, within walking distance to the Foodland, Tim Hortons, Hospital, Post Office, and the downtown Retail stores. Property features a minimum of 8 parking spaces with a circular driveway, large shade trees, a large private back-yard area and entrance to Unit 6. The Building features a security intercom system, a centre hall plan for entrance to 5 Apartments and a lower level common coin operated laundry room. The Apartments have been updated over the years and are all in good condition with character features of the older Victorian style construction. This building has always been in high demand and has never operated with any vacancies. Note that the interior photos were taken in 2019. Also listed as Commercial Sale MLS X12457075 (id:6289)



Essential Information

Listing #	X12457071
Price	\$949,000
Bedrooms	6
Bathrooms	6.00
Acres	0.00
Type	Multi-family

Community Information

Address	319 Berford Street
Subdivision	South Bruce Peninsula
City	South Bruce Peninsula
Province	Ontario
Postal Code	N0H2T0

Amenities

Amenities	Beach, Hospital, Marina, Schools, Separate Heating Controls
Utilities	Cable, Electricity, Sewer
Features	Flat site
Parking Spaces	8
Parking	No Garage

Interior

Appliances	Stove, Refrigerator
Heating	Natural gas Forced air
# of Stories	2

Exterior

Exterior	Brick, Vinyl siding
Lot Description	115 x 250 FT 1/2 - 1.99 acres
Foundation	Stone

Listing Details

Listing Office	Chestnut Park Real Estate
----------------	---------------------------



The trademarks MLS®, Multiple Listing Service® and the associated logos are owned by The Canadian Real Estate Association (CREA) and identify the quality of services provided by real estate professionals who are members of CREA. REALTOR®. Member of CREA and more.

Listing information last updated on October 14th, 2025 at 11:46pm PDT