

\$734,900 - 6 Woodmere Path, Middlesex Centre (Ilderton)

MLS® #X12455481

\$734,900

3 Bedroom, 3.00 Bathroom,
Single Family on 0.00 Acres



Ilderton, Middlesex Centre (Ilderton), Ontario

TO BE BUILT. Welcome to the NEW MEDEIROS layout with a NEW PRICE by Vranic Homes. 1800 sq ft of beauty and luxury. This 3 bedroom two storey home in beautiful Clear Skies is available with closing in early to mid 2026. Come and select your own finishings, and don't wait our special pricing is first come first served. Quartz counters throughout, plus design your own kitchen with our design consultant! See documents for a list of standard features. Visit our model at 133 Basil Cr in Ilderton, open Saturdays and Sundays from 2-4 or by appointment. Other models and lots are available, ask for the complete builder's package. (id:6289)



EXTERIOR FINISHES ARE FOR ILLUSTRATIVE PURPOSES AND MAY NOT BE STANDARD

Essential Information

Listing #	X12455481
Price	\$734,900
Bedrooms	3
Bathrooms	3.00
Half Baths	1
Acres	0.00
Type	Single Family
Sub-Type	Freehold

Community Information

Address 6 Woodmere Path

Subdivision Ilderton
City Middlesex Centre (ilderton)
Province Ontario
Postal Code N0M2A0



Amenities

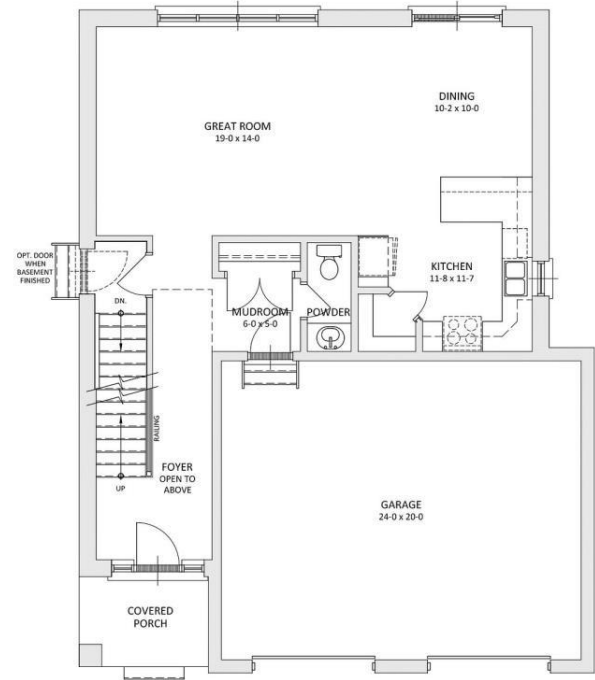
Parking Spaces 4
Parking Attached Garage, Garage
of Garages 2

Interior

Appliances Water Heater
Heating Natural gas Forced air
Cooling Central air conditioning
of Stories 2

Exterior

Exterior Brick, Vinyl siding
Lot Description 40.1 x 114.8 FT|under 1/2 ac
Foundation Poured Concrete



MAIN FLOOR PLAN
851 SQ.FT.

ACTUAL FLOOR SPACE MAY VARY, PLANS AND SPECIFICATIONS ARE SUBJECT TO CHANGE

Listing Details

Listing Office CENTURY 21 FIRST CANADIAN CORP



The trademarks MLS®, Multiple Listing Service® and the associated logos are owned by The Canadian Real Estate Association (CREA) and identify the quality of services provided by real estate professionals who are members of CREA. REALTOR®. Member of CREA and more.

Listing information last updated on October 13th, 2025 at 9:31pm PDT