

\$1,949,000 - 7 Carl Crescent, Hamilton (waterdown)

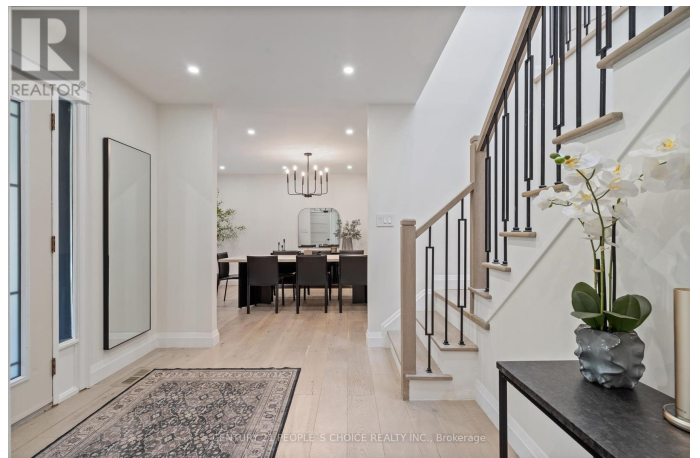
MLS® #X12455168

\$1,949,000

6 Bedroom, 4.00 Bathroom,
Single Family on 0.00 Acres

Waterdown, Hamilton (waterdown), Ontario

Welcome to 7 Carl Crescent, your perfect blend of design, comfort, and function on one Waterdown's most desirable streets. This 4+2 bed 3+1 home offers over 3,000 sq ft of sun-filled living with a chef's kitchen, quartz island, and premium appliances. A separate-entrance lower level with full kitchen and bath suits in-laws or income. Enjoy a pool-sized yard and heated studio steps from parks, schools, and commuter routes. Everything is Newly Upgraded throughout: engineered hardwood, skylights, and custom millwork. Chefs' kitchen with oversized quartz island, premium appliances, and smart layout. Separate entrance lower level with full suite, ideal for in-laws or income. Extras: Beautifully reimaged from top to bottom, this home features thoughtful upgrades throughout. Modern lighting, remote blinds, elegant millwork and custom storage solutions. The primary suite boasts a spa-inspired ensuite and walk-in closet, while skylights flood the upper level with natural light. Step outside to an entertainers dream: a landscaped, pool-sized yard with a heated studio perfect for a gym, office, or creative space. With a full in-law suite, smart home features, and ample parking, this property blends everyday luxury with exceptional flexibility in one of Waterdown's most connected neighborhoods. (id:6289)



Essential Information

Listing #	X12455168
Price	\$1,949,000
Bedrooms	6
Bathrooms	4.00
Half Baths	1
Acres	0.00
Type	Single Family
Sub-Type	Freehold

Community Information

Address	7 Carl Crescent
Subdivision	Waterdown
City	Hamilton (waterdown)
Province	Ontario
Postal Code	L0R2H4

Amenities

Utilities	Electricity, Sewer
Parking Spaces	6
Parking	Garage
# of Garages	1

Interior

Appliances	Dishwasher, Dryer, Microwave, Stove, Washer, Refrigerator
Heating	Natural gas Forced air
Cooling	Central air conditioning
Fireplace	Yes
# of Stories	2
Has Basement	Yes
Basement	Separate entrance

Exterior

Exterior	Brick, Stucco
Lot Description	75 x 102.4 FT
Foundation	Concrete

Listing Details

Listing Office	CENTURY 21 PEOPLE'S CHOICE REALTY INC.
----------------	----------------------------------------



The trademarks MLS®, Multiple Listing Service® and the associated logos are owned by The Canadian Real Estate Association (CREA) and identify the quality of services provided by real estate professionals who are members of CREA. REALTOR®. Member of CREA and more.

Listing information last updated on October 12th, 2025 at 5:16pm PDT