

\$739,000 - 550 Borbridge Avenue, Ottawa

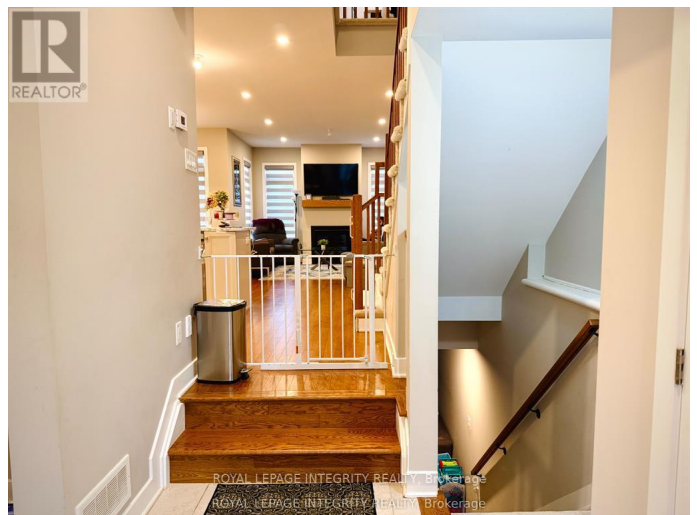
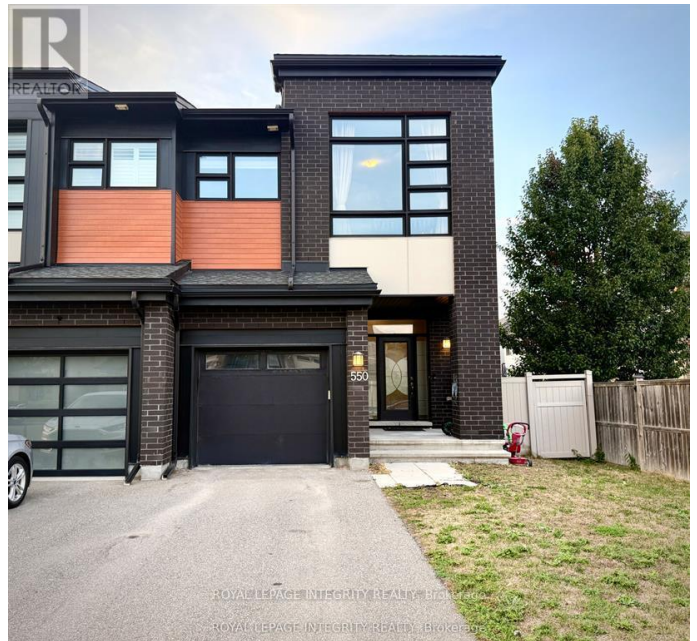
MLS® #X12445955

\$739,000

3 Bedroom, 4.00 Bathroom,
Single Family on 0.00 Acres

2602 - Riverside South/Gloucester Glen,
Ottawa, Ontario

Nestled on an extra-large lot (30.64*150 feet), this beautifully updated END-UNIT townhouse by Urbandale offers a perfect blend of space, light, and modern luxury in the heart of Blossom Park. Inside, an inviting 1,873 sq ft open-concept layout is bathed in natural light. The heart of the home is a chef-ready kitchen, featuring a gas stove, stainless steel appliances, and a generous island ideal for gathering. Ascend to the second floor, where 9-foot ceilings enhance the airy atmosphere. The primary bedroom is a true retreat, boasting a soaring 10-foot ceiling, a spacious walk-in closet, and a luxurious 4-piece ensuite. Two additional well-proportioned bedrooms, seamlessly integrated laundry, and a flexible loft for a home office provide unparalleled convenience and functionality. Outside, your private, generously-sized yard awaits, offering a serene escape. Practicality is assured with parking for three vehicles, including an attached garage and two driveway parking spots. Enjoy a prime, family-friendly neighborhood just moments from the LRT, shopping, and all the amenities. This is a home designed for exceptional living--schedule your viewing! (id:6289)



Essential Information

Listing #	X12445955
Price	\$739,000

Bedrooms	3
Bathrooms	4.00
Half Baths	1
Acres	0.00
Type	Single Family
Sub-Type	Freehold

Community Information

Address	550 Borbridge Avenue
Subdivision	2602 - Riverside South/Gloucester Glen
City	Ottawa
Province	Ontario
Postal Code	K4M0H9

Amenities

Amenities	Park, Public Transit
Parking Spaces	3
Parking	Attached Garage, Garage
# of Garages	2

Interior

Appliances	Garage door opener remote(s), Blinds, Dishwasher, Dryer, Stove, Washer, Refrigerator
Heating	Natural gas Forced air
Cooling	Central air conditioning
Fireplace	Yes
# of Stories	2
Has Basement	Yes

Exterior

Exterior	Brick
Lot Description	30.6 x 150 FT
Foundation	Concrete

Listing Details

Listing Office	ROYAL LEPAGE INTEGRITY REALTY
----------------	-------------------------------



The trademarks MLS®, Multiple Listing Service® and the associated logos are owned by The Canadian Real Estate Association (CREA) and identify the quality of services provided by real estate professionals who are members of CREA. REALTOR®. Member of CREA and more.

Listing information last updated on October 15th, 2025 at 6:16am PDT