

\$739,000 - 14 Peachtree Parkway, Pelham (fonthill)

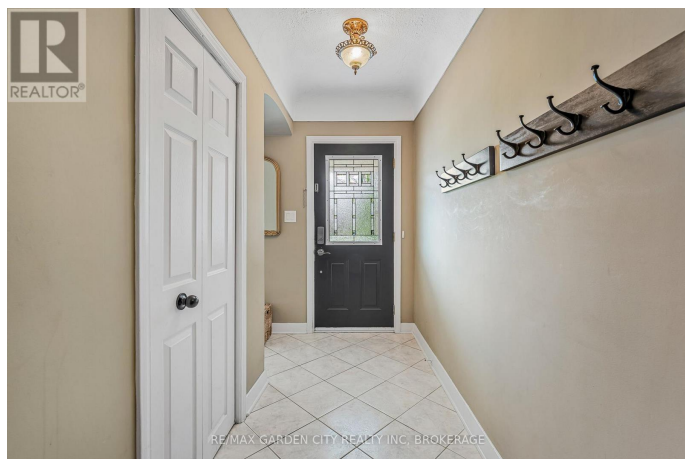
MLS® #X12443665

\$739,000

3 Bedroom, 3.00 Bathroom,
Single Family on 0.00 Acres

662 - Fonthill, Pelham (fonthill), Ontario

Sprawling 2000 sq. ft. plus 3 Bedroom, 3 Bathroom, Bungalow offers everything on one Main level. Fabulous Peachtree Parkway Fonthill, close to everything, is a scenic Cul De Sac street. Open Concept Kitchen, Family Room with Fireplace that leads out to a screened in Back Sunroom and spacious backyard. Large Foyer, Living Room and Formal Dining Room with a Bathroom close by, offers IN LAW potential. Also on one level, large Laundry Room, 3 Bathrooms, good sized Bedrooms, extra wide halls, and a secondary Sunroom off the kitchen. This home has a small basement and is mainly a 4 ft. insulated and dry crawl space affording some 1800 sq. ft of storage space. Single car garage will only suit one small auto. Large Driveway, Interlocking pavers parks 4 vehicles. Fully Fenced back yard with 2 gates. Other features include pot lights, sun tunnels, high end light fixtures, direct BBQ hookup and fire pit. Roof GAF Fiberglas 35 shingles 2016, Furnace and AC 2010, 100 Amp electrical all copper, All Plumbing ABS and Copper. UT's bills average for water, gas, hydro \$352 per month year Fantastic neighborhood, don't miss out. Homes in this sought after area seldom come up on market. (id:6289)



Essential Information

Listing #	X12443665
Price	\$739,000

Bedrooms	3
Bathrooms	3.00
Half Baths	1
Acres	0.00
Type	Single Family
Sub-Type	Freehold
Style	Bungalow

Community Information

Address	14 Peachtree Parkway
Subdivision	662 - Fonthill
City	Pelham (fonthill)
Province	Ontario
Postal Code	L0S1E0

Amenities

Amenities	Place of Worship, Schools, Fireplace(s)
Utilities	Cable, Electricity, Sewer
Features	Wooded area, Irregular lot size
Parking Spaces	5
Parking	Attached Garage, Garage
# of Garages	2

Interior

Appliances	Garage door opener remote(s), Water meter, Dishwasher, Dryer, Garage door opener, Microwave, Stove, Washer, Water softener, Refrigerator
Heating	Natural gas Forced air
Cooling	Central air conditioning
Fireplace	Yes
# of Fireplaces	1
# of Stories	1

Exterior

Exterior	Brick
Exterior Features	Landscaped
Lot Description	60 x 170.2 FT under 1/2 acre
Foundation	Poured Concrete, Block

Listing Details

Listing Office

RE/MAX GARDEN CITY REALTY INC, BROKERAGE



The trademarks MLS®, Multiple Listing Service® and the associated logos are owned by The Canadian Real Estate Association (CREA) and identify the quality of services provided by real estate professionals who are members of CREA. REALTOR®. Member of CREA and more.

Listing information last updated on October 14th, 2025 at 11:46pm PDT