

# \$755,000 - A110 - 2062 Lumen Drive, London South (south A)

---

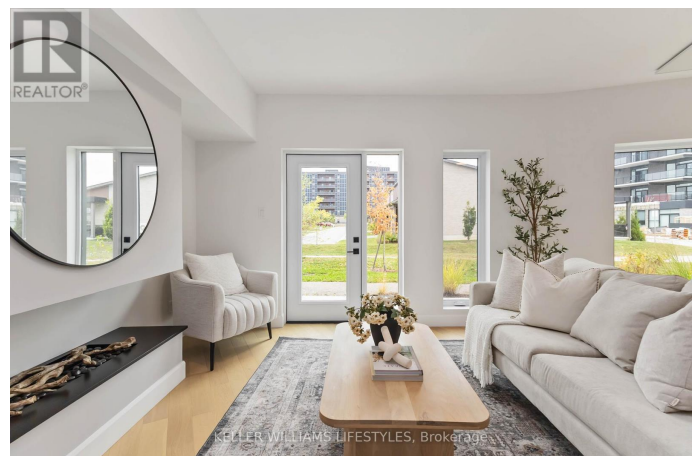
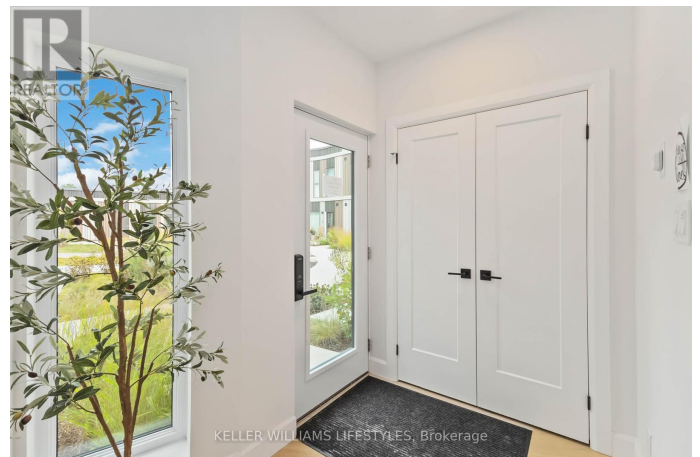
MLS® #X12441948

**\$755,000**

2 Bedroom, 3.00 Bathroom,  
Single Family

South A, London South (south A), Ontario

Welcome to A110 The Gooseberry at 2062 Lumen Drive in the award-winning EVE Park community. This BRAND NEW never occupied modern 2 bedroom, 2.5 bathroom home offers 1,519 square feet of thoughtfully designed living space across two levels, blending style, comfort, and sustainability. The main floor features a spacious open-concept layout with contemporary finishes, a bright kitchen and dining area, and a versatile home office that suits today's lifestyle. Anchoring the living space is a super cool Optimyst fireplace, adding warmth, ambiance, and a modern touch. Upstairs, the primary retreat boasts a walk-in closet, spa-inspired ensuite with an oversized vanity, and a private balcony with elevated views. Complete with a private ground floor entrance and personal stairway, this home combines the convenience of condo living with the feel of a townhome. Designed as a net-zero community, EVE Park offers a forward-thinking lifestyle with solar energy, shared green spaces, walking trails, and quick access to nearby schools, parks, and amenities. Experience living designed for the future, today. (id:6289)



## Essential Information

Listing #	X12441948
Price	\$755,000

Bedrooms	2
Bathrooms	3.00
Half Baths	1
Type	Single Family
Sub-Type	Condominium/Strata

### Community Information

Address	A110 - 2062 Lumen Drive
Subdivision	South A
City	London South (south A)
Province	Ontario
Postal Code	N6K0L3

### Amenities

Amenities	Park, Public Transit, Fireplace(s)
Features	Flat site, Balcony
Parking Spaces	1
Parking	Covered, Garage
# of Garages	1

### Interior

Appliances	Dishwasher, Dryer, Microwave, Stove, Washer, Refrigerator
Heating	Electric Heat Pump
Cooling	Central air conditioning
Fireplace	Yes
# of Fireplaces	1
# of Stories	2

### Exterior

Exterior	Steel
Exterior Features	Landscaped
Foundation	Poured Concrete

### Listing Details

Listing Office	KELLER WILLIAMS LIFESTYLES
----------------	----------------------------



Association (CREA) and identify the quality of services provided by real estate professionals who are members of CREA. REALTOR®. Member of CREA and more.

Listing information last updated on October 14th, 2025 at 2:16am PDT