

\$3,000 - 47 Blacksmith Drive, Woolwich

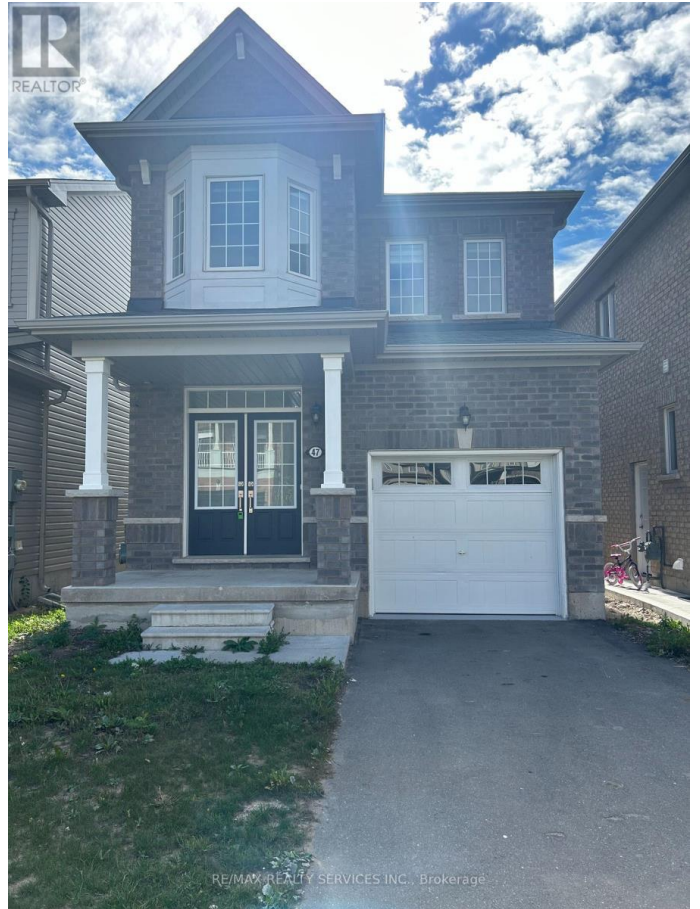
MLS® #X12436566

\$3,000

3 Bedroom, 3.00 Bathroom,
Single Family

N/A, Woolwich, Ontario

Absolutely Stunning Fully Detached 3 Bed, 3 Bath In The Lovely Empire Riverland Community & Elementary School Plus Community Centre. This Home Is Fully Loaded. Brick Model, Completely Upgraded W/ Double Door Entry, 9' Ceiling On Main level, Spacious Great Room, Stainless Steel Kitchen Appliances, Oak Staircase, Hardwood Floors Throughout the main level, Master Bedroom With 4Pc Ensuite & Walk-In Closet, 2nd Floor Laundry. (id:6289)



Essential Information

Listing #	X12436566
Price	\$3,000
Bedrooms	3
Bathrooms	3.00
Half Baths	1
Type	Single Family
Sub-Type	Freehold

Community Information

Address	47 Blacksmith Drive
Subdivision	N/A
City	Woolwich
Province	Ontario
Postal Code	N0B1M0

Amenities

Parking Spaces	2
----------------	---

Parking Attached Garage, Garage
of Garages 2

Interior

Heating Natural gas Forced air
Cooling Central air conditioning
Fireplace Yes
of Stories 2

Exterior

Exterior Brick
Foundation Brick, Concrete

Listing Details

Listing Office RE/MAX REALTY SERVICES INC.



The trademarks MLS®, Multiple Listing Service® and the associated logos are owned by The Canadian Real Estate Association (CREA) and identify the quality of services provided by real estate professionals who are members of CREA. REALTOR®. Member of CREA and more.

Listing information last updated on October 13th, 2025 at 11:01am PDT

