

# \$745,000 - 286 E 12th Street, Hamilton (Inch Park)

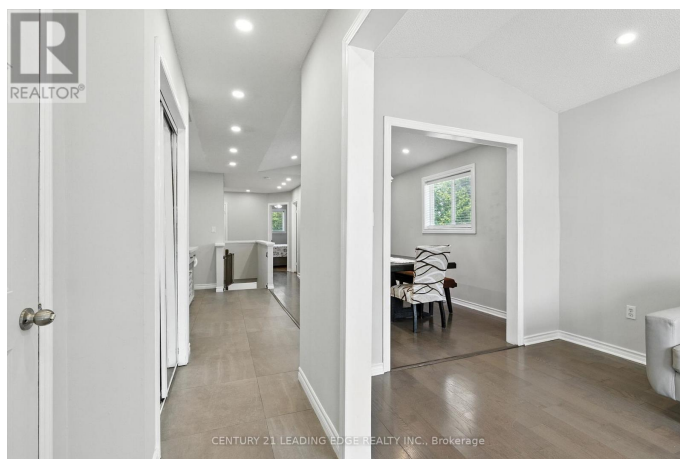
MLS® #X12433799

**\$745,000**

4 Bedroom, 2.00 Bathroom,  
Single Family on 0.00 Acres

Inch Park, Hamilton (Inch Park), Ontario

Welcome to this bright, move-in ready bungalow nestled in one of Hamilton Mountains most desirable family neighborhoods. This solid home features 3 bedrooms on the main floor plus an additional bedroom in the fully finished basement, along with 2 stylish, updated bathrooms. Enjoy the warmth and charm of hardwood floors throughout no carpet! The home has seen numerous upgrades, including a beautiful, modern kitchen is equipped with updated appliances, new furnace, newer front door, and pot lights on the main level. . The professionally finished basement (2022) adds major value with a spacious rec room, a 4-piece bathroom, and a 4th bedroom perfect for guests, in-laws, or a potential rental suite. There's plenty of space and flexibility to grow with your needs. Incomparable to most of the homes in the area, this home is much newer, built in 1998! Outside, you'll love the bright, oversized single-car garage with additional storage space and a private backyard, ideal for family time or entertaining. Conveniently located within walking distance to public transit, Hospital, parks (Inch, Bruce & Sam Lawrence), Hillcrest Rec Centre, and top-rated schools, daycares, and churches. Just minutes from Limeridge Mall and with easy access to downtown, this home truly offers location, lifestyle, and long-term value. Dont miss this opportunity to own a beautifully upgraded home in a high-demand neighborhood just move in and enjoy! Stove (2018), dishwasher



(2020), and washer (2019). With 200-amp service, furnace and AC unit only 9 years old, New water softener system for the entire home! (id:6289)

**Essential Information**

Listing #	X12433799
Price	\$745,000
Bedrooms	4
Bathrooms	2.00
Acres	0.00
Type	Single Family
Sub-Type	Freehold
Style	Bungalow

**Community Information**

Address	286 E 12th Street
Subdivision	Inch Park
City	Hamilton (inch Park)
Province	Ontario
Postal Code	L9A3X8

**Amenities**

Amenities	Park, Public Transit
Parking Spaces	3
Parking	Attached Garage, Garage
# of Garages	2

**Interior**

Appliances	Dishwasher, Stove, Washer, Window Coverings
Heating	Natural gas Forced air
Cooling	Central air conditioning
# of Stories	1
Has Basement	Yes

**Exterior**

Exterior	Aluminum siding, Brick
Lot Description	30 x 112.2 FT

Foundation

Concrete

## Listing Details

Listing Office

CENTURY 21 LEADING EDGE REALTY INC.



The trademarks MLS®, Multiple Listing Service® and the associated logos are owned by The Canadian Real Estate Association (CREA) and identify the quality of services provided by real estate professionals who are members of CREA. REALTOR®. Member of CREA and more.

Listing information last updated on October 13th, 2025 at 7:01am PDT