

# \$355,000 - 870 Concession 1 Road, Alfred And Plantagenet

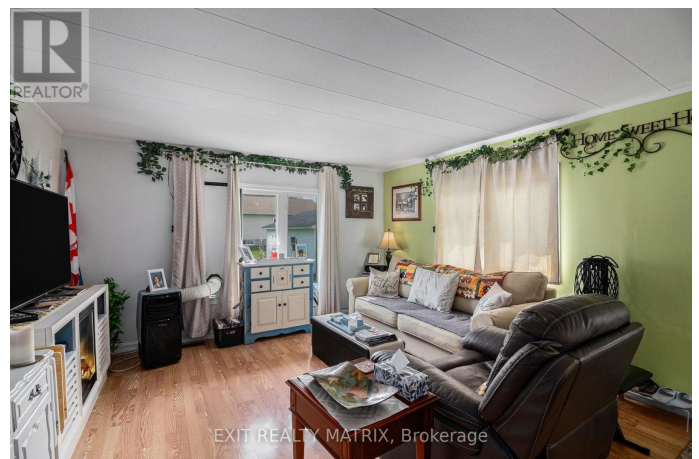
MLS® #X12339584

**\$355,000**

2 Bedroom, 1.00 Bathroom,  
Single Family on 0.00 Acres

608 - Plantagenet, Alfred And Plantagenet,  
Ontario

Are you ready to leave the hustle and bustle of the city behind and settle for the peace, tranquility and freedom of rural living? Maybe, you're ready for that small home with the big potential? This 900 square foot, two-bedroom, 1 full bathroom updated bungalow is all you want and everything you need. Big enough to stretch your legs and live comfortably, and small enough to allow you to spend your time doing what's important to you. You are within an hour's distance from Ottawa, and a 3-minute walk to the Treadwell Marina on the Ottawa river. A clean, well kept boat launch to put your kayak in the water and breath the fresh air. Imagine coming home and kicking off your shoes and hearing nothing but the birds. The kitchen has plenty of cupboards, with the mud room off the kitchen with storage galore for all your winter gear. The open concept living, dining and kitchen make entertaining a pleasure. Then step out onto the new low maintenance composite deck to enjoy your morning coffee while enjoying the view of the rolling farmers fields behind you as far as the eye can see. The sunrises and sunsets will take your breath away every time. On the Left of the property, you have an insulated, heated and recently renovated hobby shop and home office with all new windows, flooring and brand-new propane fireplace. Just add plumbing, and you have



the potential for a separate 1-bedroom studio/  
in-law apt. Across the yard, behind the house,  
you have a single car garage that has been  
turned into a heated, insulated workshop with  
(full width) storage room at the back, and new  
roof Oct. 2024. Do you want to be independent  
and grow your food and farm your own  
chickens? This country gem is all you need!  
(id:6289)

**Essential Information**

Listing #	X12339584
Price	\$355,000
Bedrooms	2
Bathrooms	1.00
Acres	0.00
Type	Single Family
Style	Bungalow

**Community Information**

Address	870 Concession 1 Road
Subdivision	608 - Plantagenet
City	Alfred And Plantagenet
Province	Ontario
Postal Code	K0B1L0

**Amenities**

Amenities	Marina, Place of Worship, Schools, Fireplace(s)
Utilities	Cable, Electricity
Parking Spaces	8
Parking	Detached Garage, Garage
# of Garages	2

**Interior**

Appliances	Water Heater, Water purifier, Water softener, Water Treatment
Heating	Oil Forced air
Fireplace	Yes
# of Fireplaces	1

# of Stories 1

## Exterior

Exterior Vinyl siding  
Lot Description 167.2 x 261.5 FT  
Foundation Unknown

## Listing Details

Listing Office EXIT REALTY MATRIX



The trademarks MLS®, Multiple Listing Service® and the associated logos are owned by The Canadian Real Estate Association (CREA) and identify the quality of services provided by real estate professionals who are members of CREA. REALTOR®. Member of CREA and more.

Listing information last updated on October 14th, 2025 at 2:46pm PDT