

\$325,000 - 1849 Fry Road, Prince Edward County (sophiasburg Ward)

MLS® #X12332562

\$325,000

0 Bedroom, 0.00 Bathroom,
Vacant Land on 0.00 Acres

Sophiasburg Ward, Prince Edward County
(sophiasburg Ward), Ontario

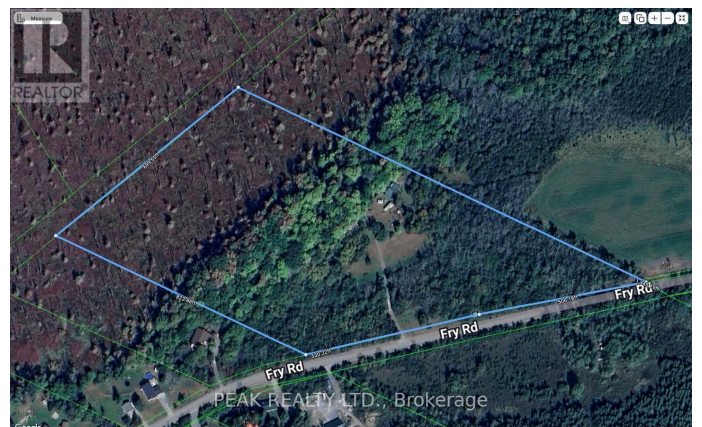
Rare 14-Acre Parcel in the Heart of Prince Edward County! Build your dream home on this stunning 14-acre property perfectly located close to Downtown Picton. Offering flat level land, mature trees, and multiple potential building sites, this is a rare opportunity to create your own private retreat in one of Ontarios most desirable destinations. Enjoy the best of both worlds - peaceful seclusion and easy access to PECs vibrant lifestyle: wineries, restaurants, shops, and Sandbanks Provincial Park are all just minutes away. Whether you're dreaming of a year-round residence, vacation home, or investment property, this one checks all the boxes for space, privacy, and location. Your Prince Edward County dream starts here! (id:6289)

Essential Information

Listing #	X12332562
Price	\$325,000
Bathrooms	0.00
Acres	0.00
Type	Vacant Land

Community Information

Address	1849 Fry Road
Subdivision	Sophiasburg Ward



City	Prince Edward County (sophiasburg Ward)
Province	Ontario
Postal Code	K0K2T0

Amenities

Amenities	Beach, Marina
Features	Level lot, Wooded area, Partially cleared, Flat site, Dry, Level

Exterior

Lot Description	1036.4 x 1345.19 FT 10 - 24.99 acres
-----------------	--------------------------------------

Listing Details

Listing Office	PEAK REALTY LTD.
----------------	------------------



The trademarks MLS®, Multiple Listing Service® and the associated logos are owned by The Canadian Real Estate Association (CREA) and identify the quality of services provided by real estate professionals who are members of CREA. REALTOR®. Member of CREA and more.

Listing information last updated on October 13th, 2025 at 8:32am PDT