

\$624,900 - 508 Cordach Crescent, Peterborough (town Ward 3)

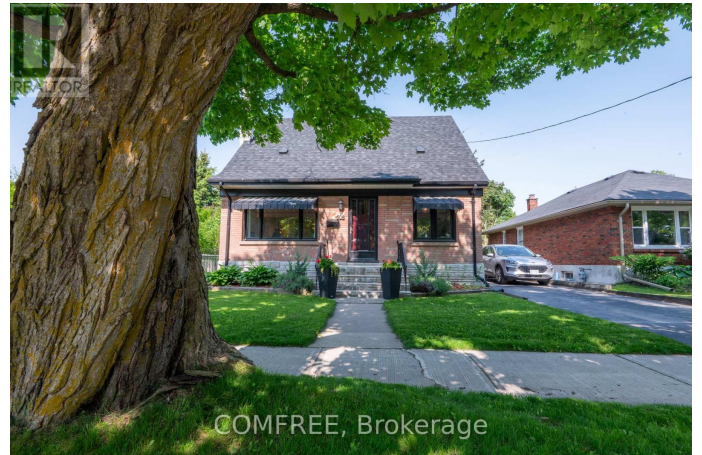
MLS® #X12307791

\$624,900

3 Bedroom, 2.00 Bathroom,
Single Family on 0.00 Acres

Town Ward 3, Peterborough (town Ward 3),
Ontario

Turnkey Beauty in a Family-Friendly Neighbourhood. Welcome to 508 Cordach Crescent a beautifully updated 3-bedroom, 2-bath home nestled in one of Peterboroughs most desirable, family-oriented neighbourhoods. This meticulously maintained property offers the perfect blend of comfort, convenience, and long-term value, making it an exceptional opportunity for first-time buyers, or growing families. Step inside to discover a warm and inviting living space featuring tasteful upgrades and modern touches throughout. The primary bedroom boasts a custom built closet a rare luxury that adds both function and flair. The new roof (2022) and furnace (2024) offer peace of mind for years to come, while the smart thermostat adds efficient climate control at your fingertips. A fully equipped, public health certified basement kitchen ideal for a home-based food business. Whether you're cooking for your family or your clients. The backyard offers a private, fully-fenced space, with perennial gardens, ideal for children, pets, or summer entertaining. Located close to top-rated schools, greenspace in Jackson Park and Bonnerworth Community Garden, and easy commuter routes, this home delivers on location as much as lifestyle. Move-in Ready." A pre-sale home inspection report available! (id:6289)



Essential Information

Listing #	X12307791
Price	\$624,900
Bedrooms	3
Bathrooms	2.00
Acres	0.00
Type	Single Family
Sub-Type	Freehold

Community Information

Address	508 Cordach Crescent
Subdivision	Town Ward 3
City	Peterborough (town Ward 3)
Province	Ontario
Postal Code	K9H3A5

Amenities

Amenities	Hospital, Park, Public Transit
Features	Conservation/green belt
Parking Spaces	3
Parking	No Garage

Interior

Appliances	Dryer, Hood Fan, Stove, Washer, Window Coverings, Refrigerator
Heating	Natural gas Forced air
Cooling	Central air conditioning
# of Stories	2
Has Basement	Yes

Exterior

Exterior	Aluminum siding, Brick
Lot Description	14.2 x 32.1 M under 1/2 acre
Foundation	Concrete

Listing Details

Listing Office	COMFREE
----------------	---------



The trademarks MLS®, Multiple Listing Service® and the associated logos are owned by The Canadian Real Estate Association (CREA) and identify the quality of services provided by real estate professionals who are members of CREA. REALTOR®. Member of CREA and more.

Listing information last updated on October 15th, 2025 at 3:16pm PDT