

\$549,000 - 3073 County 10 Road, Prince Edward County (south Marysburg Ward)

MLS® #X12303885

\$549,000

0 Bedroom, 0.00 Bathroom, 7,116 sqft

Retail on 0.00 Acres

South Marysburg Ward, Prince Edward County
(south Marysburg Ward), Ontario

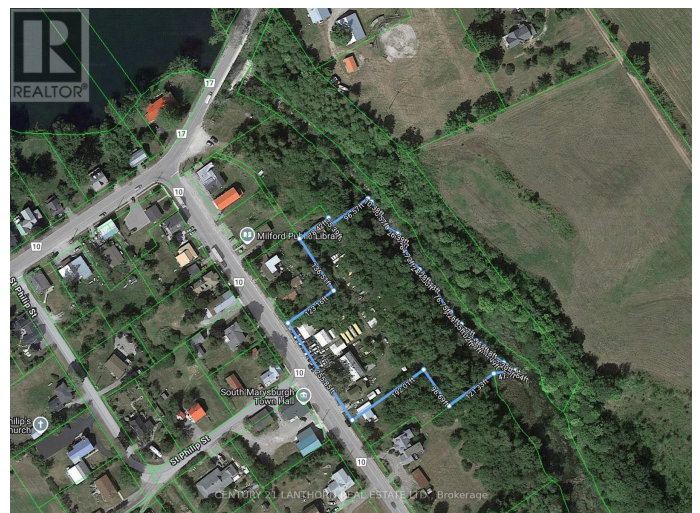
This 2.6 acre property has commercial zoning and is right by the heart of Milford. 255 ft frontage denotes the Local Commercial portion of the property and there is also residential residential zoning along the 450ft riverside portion of the property. The 5700sq foot red brick warehouse with silver metal roof is the iconic Minaker's Auto Parts since 1925, the same owners since 1937. Currently outfitted for a mechanic shop with extensive storage and several additional out buildings. 1400sq foot residence with 3 bed and 1.5 bath. There are 2 civic addresses and separate entrances to the property. Phase 1 environmental has been completed. (id:6289)

Essential Information

Listing #	X12303885
Price	\$549,000
Bathrooms	0.00
Square Footage	7,116
Acres	0.00
Type	Retail

Community Information

Address	3073 County 10 Road
Subdivision	South Marysburg Ward
City	Prince Edward County (south Marysburg Ward)



Province Ontario
Postal Code K0K2P0

Interior

Heating Other

Exterior

Lot Description Bldg=255.85 x 355 FT

Listing Details

Listing Office CENTURY 21 LANTHORN REAL ESTATE LTD.



The trademarks MLS®, Multiple Listing Service® and the associated logos are owned by The Canadian Real Estate Association (CREA) and identify the quality of services provided by real estate professionals who are members of CREA. REALTOR®. Member of CREA and more.

Listing information last updated on October 13th, 2025 at 10:46am PDT