

\$399,000 - 5466 Mitch Owens Road, Ottawa

MLS® #X12298996

\$399,000

0 Bedroom, 0.00 Bathroom,
Vacant Land on 0.00 Acres

8005 - Manotick East to Manotick Station,
Ottawa, Ontario

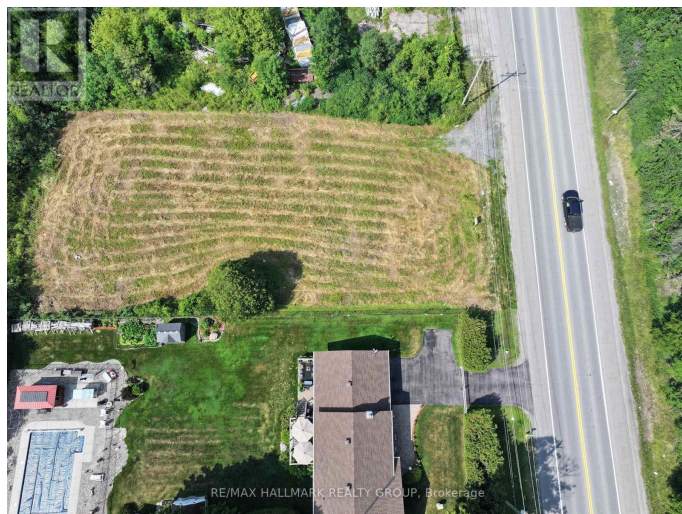
High-Exposure Lot in Prime Manotick Location
Build Your Dream or Investment
Property! Rare opportunity to build a custom home with a secondary dwelling unit on a large 100 ft x 170 ft lot with premium exposure on Mitch Owens Road. Perfect for buyers or investors looking to combine residential living with business potential ideal for home-based businesses, rental income, or multi-generational living. Just minutes to Rideau Carleton Casino, St. Mark High School, George Nelms Sports Park, and all the charm of Manotick. Only 20 minutes to downtown Ottawa, this location offers the perfect blend of visibility, versatility, and convenience. A strategic investment in a growing and in-demand community don't miss out! (id:6289)

Essential Information

| | |
|-----------|-------------|
| Listing # | X12298996 |
| Price | \$399,000 |
| Bathrooms | 0.00 |
| Acres | 0.00 |
| Type | Vacant Land |

Community Information

| | |
|-------------|--|
| Address | 5466 Mitch Owens Road |
| Subdivision | 8005 - Manotick East to Manotick Station |
| City | Ottawa |



Province Ontario
Postal Code K4M1B2

Amenities

Amenities Golf Nearby, Park
Parking No Garage

Exterior

Lot Description 100 x 170 FT ; 0|under 1/2 acre

Listing Details

Listing Office RE/MAX HALLMARK REALTY GROUP



The trademarks MLS®, Multiple Listing Service® and the associated logos are owned by The Canadian Real Estate Association (CREA) and identify the quality of services provided by real estate professionals who are members of CREA. REALTOR®. Member of CREA and more.

Listing information last updated on October 15th, 2025 at 3:16am PDT