

\$249,900 - 2328 Crowder Road, Edwardsburgh/Cardinal

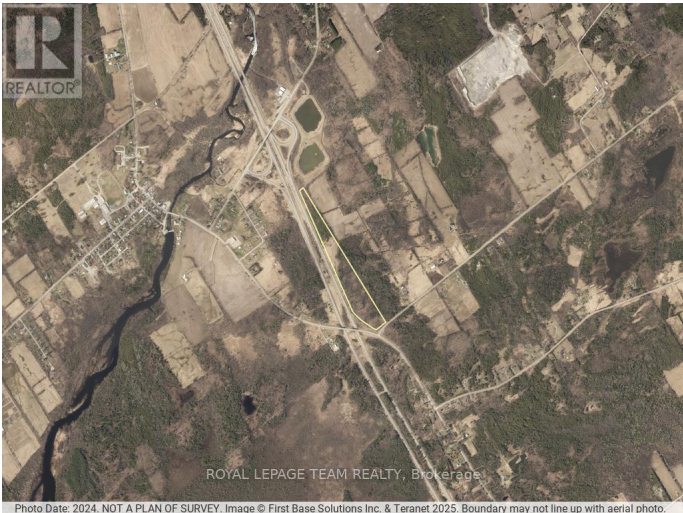
MLS® #X12296543

\$249,900

0 Bedroom, 0.00 Bathroom,
Vacant Land on 0.00 Acres

807 - Edwardsburgh/Cardinal Twp,
Edwardsburgh/Cardinal, Ontario

This versatile 25+ acre property offers a rare opportunity just minutes from Spencerville and Highway 416, making it ideal for commuters to both Ottawa and Brockville. Featuring a mix of mature bush and open, cleared areas, the land is rich with natural beauty, space, and local wildlife. Whether you're dreaming of building your own private retreat, hobby farm, or country estate, this parcel provides the perfect canvas. With the potential to have up to three homes (buyer to verify with township), this property also presents a unique opportunity for future development to include multi-generational living with additional family dwellings. Build now for yourself and add in parents/children later for a unique, family-oriented property, or build and use as a recreational property with income-producing potential. With no bad choices here, this is your chance to shape the land to suit your vision! (id:6289)



Essential Information

| | |
|-----------|-------------|
| Listing # | X12296543 |
| Price | \$249,900 |
| Bathrooms | 0.00 |
| Acres | 0.00 |
| Type | Vacant Land |

Community Information

| | |
|-------------|---------------------------------|
| Address | 2328 Crowder Road |
| Subdivision | 807 - Edwardsburgh/Cardinal Twp |
| City | Edwardsburgh/cardinal |
| Province | Ontario |
| Postal Code | K0E1X0 |

Amenities

| | |
|----------|--------------------|
| Features | Irregular lot size |
|----------|--------------------|

Exterior

| | |
|-----------------|--------------------------------------|
| Lot Description | 257.93 x 2859.04 FT 10 - 24.99 acres |
|-----------------|--------------------------------------|

Listing Details

| | |
|----------------|--------------------------|
| Listing Office | ROYAL LEPAGE TEAM REALTY |
|----------------|--------------------------|



The trademarks MLS®, Multiple Listing Service® and the associated logos are owned by The Canadian Real Estate Association (CREA) and identify the quality of services provided by real estate professionals who are members of CREA. REALTOR®. Member of CREA and more.

Listing information last updated on October 13th, 2025 at 8:01am PDT