

\$540,000 - 960 Milford Drive, Kingston (north Of Taylor-Kidd Blvd)

MLS® #X12296283

\$540,000

3 Bedroom, 2.00 Bathroom,
Single Family on 0.00 Acres

39 - North of Taylor-Kidd Blvd, Kingston (north Of Taylor-Kidd Blvd), Ontario

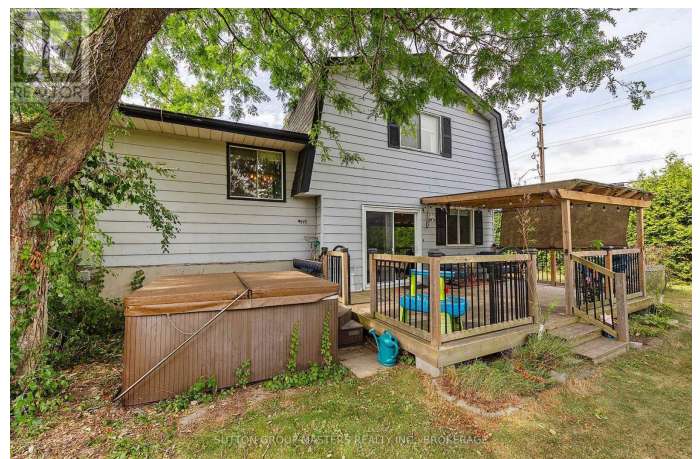
Great home for a growing family. 500-1000 meters to local schools/parks, 190 meters to groceries/shopping plaza. Open concept kitchen & dining provides a perfect space for entertaining. Bedrooms are co-located upstairs close to the primary bathroom, featuring a large jacuzzi tub and stand alone shower. The finished basement can be used as an office or in-law suite. With a Lot size of over 9700 feet, there is enough space for an additional dwelling unit. Relax on the deck or soak in the tub after a long day. Garage, Crawlspace, Shed, & leanto provide a seemingly endless supply of storage. (id:6289)

Essential Information

Listing #	X12296283
Price	\$540,000
Bedrooms	3
Bathrooms	2.00
Acres	0.00
Type	Single Family
Sub-Type	Freehold

Community Information

Address	960 Milford Drive
Subdivision	39 - North of Taylor-Kidd Blvd
City	Kingston (north Of Taylor-Kidd Blvd)



Province	Ontario
Postal Code	K7P1N6

Amenities

Utilities	Cable, Electricity, Sewer
Features	Irregular lot size
Parking Spaces	5
Parking	Garage
# of Garages	1

Interior

Appliances	Hot Tub, Garage door opener remote(s), Water Heater, Dishwasher, Dryer, Stove, Washer, Refrigerator
Heating	Natural gas Forced air
Cooling	Central air conditioning
Has Basement	Yes

Exterior

Exterior	Vinyl siding, Brick Facing
Lot Description	82 x 131.2 FT under 1/2 acre
Foundation	Concrete

Listing Details

Listing Office	SUTTON GROUP-MASTERS REALTY INC., BROKERAGE
----------------	---



The trademarks MLS®, Multiple Listing Service® and the associated logos are owned by The Canadian Real Estate Association (CREA) and identify the quality of services provided by real estate professionals who are members of CREA. REALTOR®. Member of CREA and more.

Listing information last updated on October 14th, 2025 at 9:16am PDT