

# \$249,900 - Ptl34 County 11 Road, South Stormont

MLS® #X12283890

**\$249,900**

0 Bedroom, 0.00 Bathroom,  
Vacant Land on 0.00 Acres

715 - South Stormont (Osnabruck) Twp, South Stormont, Ontario

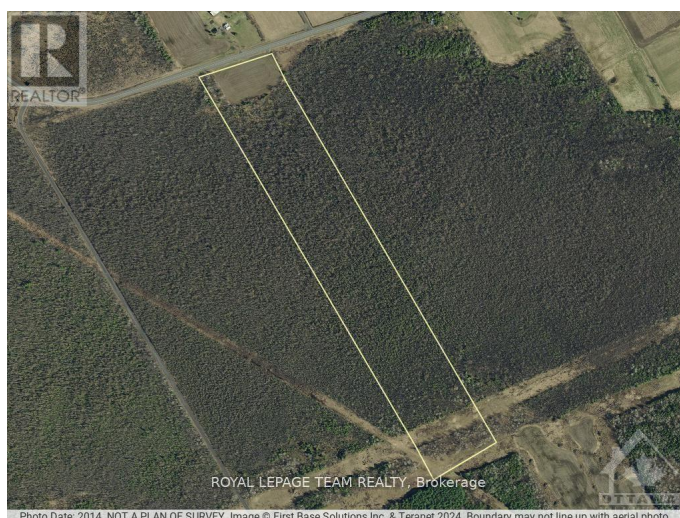
Fantastic parcel of land located in South Stormont, approximately 10 minutes from Chesterville and 10 minutes from the Highway 401 (Ingleside). This property offers a 2.5 acre field along County road 11, which is the perfect spot to build your new dream home or cottage. The remaining 46 acres of forested land are yours to enjoy whether you are an outdoor enthusiastic, nature lover, hunter or just want some privacy! There is a variety of trees on the property including white oak, maple and ash. There is also a clearing near the back of the property. Hydro is located across County road 11. Well and septic would be required. This is your opportunity to put down some roots and enjoy the peaceful days and starry nights that you find in the country. (id:6289)

## Essential Information

Listing #	X12283890
Price	\$249,900
Bathrooms	0.00
Acres	0.00
Type	Vacant Land

## Community Information

Address	Ptl34 County 11 Road
Subdivision	715 - South Stormont (Osnabruck) Twp
City	South Stormont



Province Ontario  
Postal Code K0C1H0

### Amenities

Utilities Cable, Electricity  
Features Wooded area, Flat site

### Exterior

Lot Description 551.62 x 3218.57 FT|25 - 50 acres

### Listing Details

Listing Office ROYAL LEPAGE TEAM REALTY



The trademarks MLS®, Multiple Listing Service® and the associated logos are owned by The Canadian Real Estate Association (CREA) and identify the quality of services provided by real estate professionals who are members of CREA. REALTOR®. Member of CREA and more.

Listing information last updated on October 14th, 2025 at 10:46pm PDT