

\$800,000 - 0 26 N, Meaford

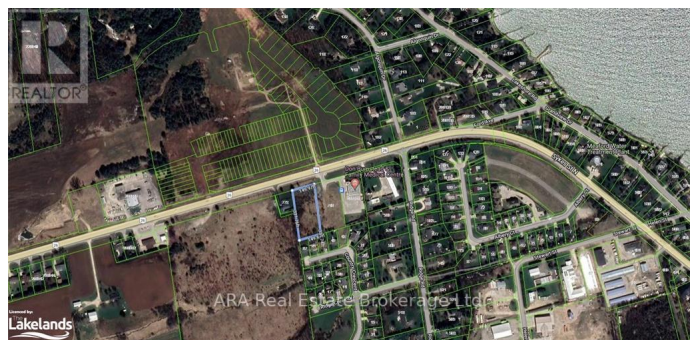
MLS® #X10439409

\$800,000

0 Bedroom, 0.00 Bathroom,
Vacant Land on 0.00 Acres

Meaford, Meaford, Ontario

C2 Zoned lot with Highway 26 exposure on the West edge of Meaford. The North side of Highway 26 has 249 residential units draft plan approved and under construction. Directly to the West is Meaford Haven Development of 15.44ha in process. Immediately adjacent to the East is the Don Bumstead & Family Medical Health Clinic. The entrance from Highway 26 comes across Part 3 as a 66 foot right of way to this parcel. The 25' easement across the rear of Part 3 is for sanitary sewers and storm water. The Municipal water is located within the 10.10' easement at the front of the property. Excellent location for retail, food, grocery etc. (id:6289)



Essential Information

Listing #	X10439409
Price	\$800,000
Bathrooms	0.00
Acres	0.00
Type	Vacant Land

Community Information

Address	0 26 N
Subdivision	Meaford
City	Meaford
Province	Ontario
Postal Code	N4L1L9

Exterior

Lot Description 150 x 350 Acre

Listing Details

Listing Office ARA Real Estate Brokerage Ltd.



The trademarks MLS®, Multiple Listing Service® and the associated logos are owned by The Canadian Real Estate Association (CREA) and identify the quality of services provided by real estate professionals who are members of CREA. REALTOR®. Member of CREA and more.

Listing information last updated on October 14th, 2025 at 2:46pm PDT