

\$4,300 - 286 Fernforest Drive, Brampton (sandringham-Wellington)

MLS® #W12467636

\$4,300

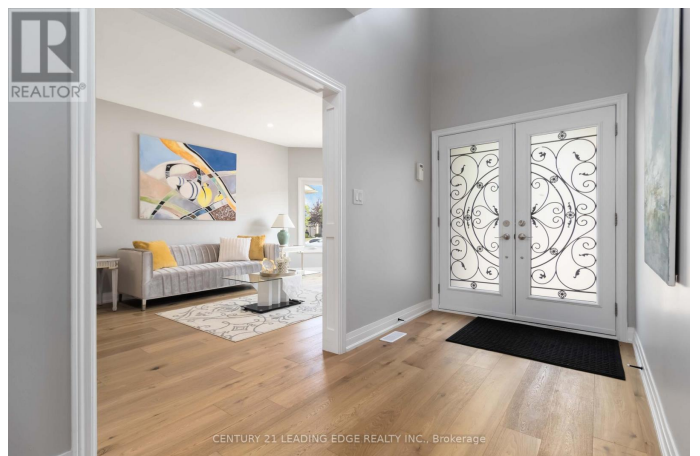
5 Bedroom, 4.00 Bathroom,
Single Family on 0.00 Acres

Sandringham-Wellington, Brampton
(sandringham-Wellington), Ontario

Discover the epitome of luxury living with this stunning, renovated 5-bedroom detached home, spanning approximately 3,755 sq ft (above grade) and boasting many recent upgrades. This exceptional residence is a rare gem, offering an unparalleled opportunity to own a home of such distinction and quality. The main floor is designed for entertaining, featuring a renovated kitchen and family room, engineered wood flooring throughout main floor and upper hallway, and an open-concept layout that radiates sophistication and warmth. The kitchen is a chef's dream, complete with custom cabinetry, and a spacious island with seating. With five generously sized bedrooms, there is ample space for both family and guests. Steps away from Fernforest PS, Lady of Providence CES, HWY 410 /407, shopping and transit. (id:6289)

Essential Information

Listing #	W12467636
Price	\$4,300
Bedrooms	5
Bathrooms	4.00
Half Baths	1
Acres	0.00
Type	Single Family



Sub-Type Freehold

Community Information

Address 286 Fernforest Drive
Subdivision Sandringham-Wellington
City Brampton (sandringham-Wellington)
Province Ontario
Postal Code L6R1B6

Amenities

Amenities Fireplace(s)
Parking Spaces 6
Parking Attached Garage, Garage
of Garages 2

Interior

Appliances Dishwasher, Dryer, Range, Stove, Washer, Refrigerator
Heating Natural gas Forced air
Cooling Central air conditioning
Fireplace Yes
of Stories 2
Has Basement Yes
Basement Walk out

Exterior

Exterior Brick
Lot Description 45.9 x 109.9 FT

Listing Details

Listing Office CENTURY 21 LEADING EDGE REALTY INC.



The trademarks MLS®, Multiple Listing Service® and the associated logos are owned by The Canadian Real Estate Association (CREA) and identify the quality of services provided by real estate professionals who are members of CREA. REALTOR®. Member of CREA and more.

Listing information last updated on October 22nd, 2025 at 9:31pm PDT