

\$1,049,000 - 26 Dolphin Song Crescent, Brampton (sandringham-Wellington)

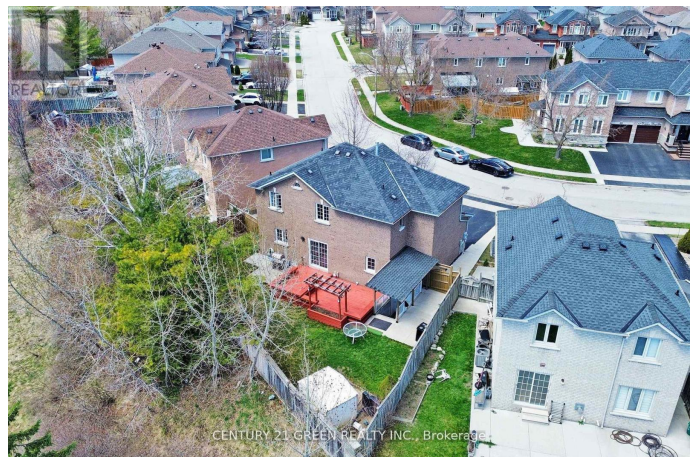
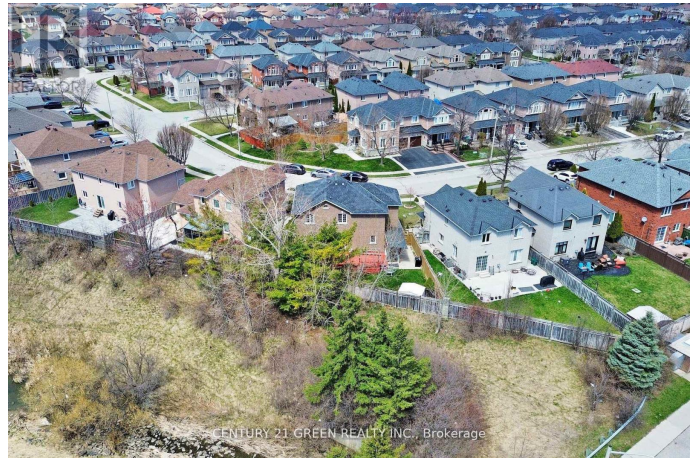
MLS® #W12458902

\$1,049,000

6 Bedroom, 4.00 Bathroom,
Single Family on 0.00 Acres

Sandringham-Wellington, Brampton
(sandringham-Wellington), Ontario

Location! Location! Location! Presenting Absolute showstopper Double Car Garage Detached on a Large Premium Pie Shape RAVINE LOT in * high demand location * of most prestigious Sandringham-wellington community of Brampton. This Beautiful 2-storey Detached is rare find features spacious 4+2 bedroom , 4 washroom with up to 6 car parking, Main Floor Laundry, Solid Oak Staircase, Fenced Private Back Yard Overlooking Ravine With Large 2 Tier Deck. Conveniently located, walking distance to Trinity mall, worship place, schools, transit, parks and close to Highway 410. This beautiful property features Main Level with living/Family room and a beautifully Appointed Kitchen combined with Dining through walkout to the deck. Second level with Spacious Master bedroom with walk-in closet and Ensuite and 3 huge bedrooms with shared 3rd and washroom on upper level. Finished basement 2 bedroom with separate entrance potential to provide extra income\$\$! Hurry!! This one won't last long. (id:6289)



Essential Information

Listing #	W12458902
Price	\$1,049,000
Bedrooms	6

Bathrooms	4.00
Half Baths	1
Acres	0.00
Type	Single Family
Sub-Type	Freehold

Community Information

Address	26 Dolphin Song Crescent
Subdivision	Sandringham-Wellington
City	Brampton (sandringham-Wellington)
Province	Ontario
Postal Code	L6R2A4

Amenities

Amenities	Park, Schools
Utilities	Cable, Electricity, Sewer
Parking Spaces	4
Parking	Garage
# of Garages	1

Interior

Appliances	Water Heater, Blinds, Dishwasher, Dryer, Two stoves, Washer, Window Coverings, Two Refrigerators
Heating	Natural gas Forced air
Cooling	Central air conditioning
Fireplace	Yes
# of Stories	2
Has Basement	Yes
Basement	Separate entrance

Exterior

Exterior	Brick
Lot Description	42.3 x 92.9 FT ; Large Premium Pie Shape Ravine Lot
Foundation	Concrete

Listing Details

Listing Office	CENTURY 21 GREEN REALTY INC.
----------------	------------------------------



The trademarks MLS®, Multiple Listing Service® and the associated logos are owned by The Canadian Real Estate Association (CREA) and identify the quality of services provided by real estate professionals who are members of CREA. REALTOR®. Member of CREA and more.

Listing information last updated on October 14th, 2025 at 10:46pm PDT