

# \$1,288,000 - 1 - 2184 Postmaster Drive W, Oakville (wm Westmount)

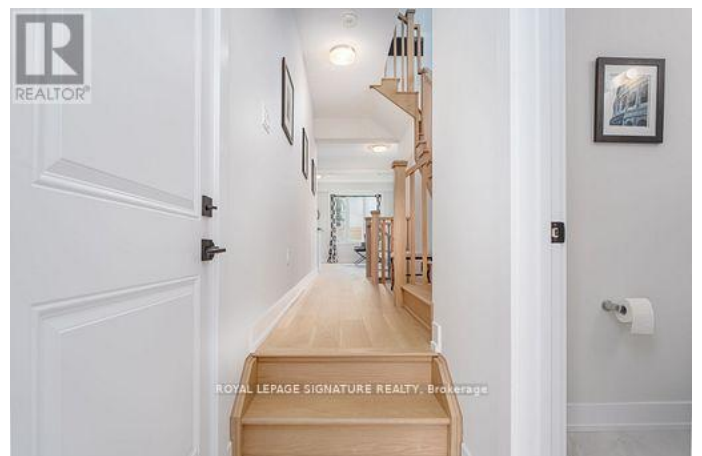
MLS® #W12458644

**\$1,288,000**

3 Bedroom, 3.00 Bathroom,  
Single Family on 0.00 Acres

1019 - WM Westmount, Oakville (wm Westmount), Ontario

Absolutely Stunning!! Welcome to this brand new Branthaven executive townhouse, a highly sought-after Westmount neighbourhood with HUGE BACKYARD. Nestled in a family-friendly, mature enclave, this 2-storey home offers over 1,800 sq. ft. of beautifully designed living space featuring 3 spacious bedrooms and 3 bathrooms. Step into the bright, modern kitchen, complete with beautiful cabinetry, quartz countertops, and a charming eat-in dining area perfect for family gatherings. The grand family room impresses with hardwood flooring, and expansive windows that flood the main level with natural light. Ascend the extra-wide oak staircase to the upper level, where you'll find three generous bedrooms, including a luxurious primary suite with a spa-inspired ensuite bathroom. An additional full bathroom completes the upper level. Located near top-rated schools, scenic parks, and walking trails, this home is perfect for families. Enjoy proximity to all amenities including shopping, restaurants, hospital, public transit, and major highways ensuring ultimate convenience. Don't miss your chance to call this spectacular home yours book your showing today! (id:6289)



## Essential Information

Listing #	W12458644
Price	\$1,288,000
Bedrooms	3
Bathrooms	3.00
Half Baths	1
Acres	0.00
Type	Single Family
Sub-Type	Freehold

### Community Information

Address	1 - 2184 Postmaster Drive W
Subdivision	1019 - WM Westmount
City	Oakville (wm Westmount)
Province	Ontario
Postal Code	L6M3X1

### Amenities

Parking Spaces	2
Parking	Attached Garage, Garage
# of Garages	2

### Interior

Appliances	Garage door opener remote(s), Dishwasher, Dryer, Stove, Washer, Refrigerator
Heating	Natural gas Forced air
Cooling	Central air conditioning
# of Stories	2

### Exterior

Exterior	Brick
Lot Description	25.4 x 88.8 FT ; Irregular 25*88*42*84
Foundation	Concrete

### Listing Details

Listing Office	ROYAL LEPAGE SIGNATURE REALTY
----------------	-------------------------------



Association (CREA) and identify the quality of services provided by real estate professionals who are members of CREA. REALTOR®. Member of CREA and more.

Listing information last updated on October 15th, 2025 at 5:31am PDT