

# \$1,399,900 - 5188 Cherryhill Crescent, Burlington (appleby)

---

MLS® #W12458639

**\$1,399,900**

4 Bedroom, 2.00 Bathroom,  
Single Family on 0.00 Acres

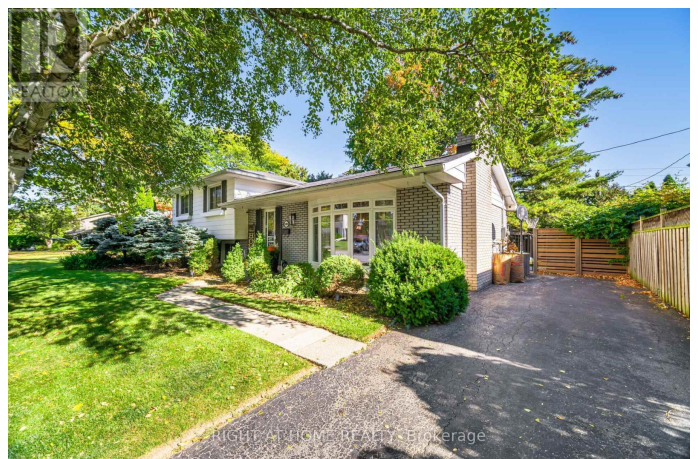
Appleby, Burlington (appleby), Ontario

WOW WOW WOW Gorgeous Detached 4 Level Sidesplit Home in Sought after Elizabeth Gardens Neighbourhood In South Burlington. Renovated in 2023 Thru-out with High End Designer Finishes. Open Concept Top To Bottom and I Mean Top To Bottom Main Floor Ceiling Raised to 13 feet and Vaulted, Designer Kitchen with 9'8" by 3'4" Centre Island for Entertaining with Upgraded Appliances. Engineered Hardwood Floors Thru-out. Three Spacious Bedrooms on Upper Level with The Main 5 pc Bath to Dead For. Large Open Family Room Plus 4th Bedroom on Lower level Which has a Separate Entrance to the backyard. This is a Must See Home Over 300K spent in Reno's and Upgrades. (id:6289)

## Essential Information

Listing #	W12458639
Price	\$1,399,900
Bedrooms	4
Bathrooms	2.00
Half Baths	1
Acres	0.00
Type	Single Family
Sub-Type	Freehold

## Community Information



Address	5188 Cherryhill Crescent
Subdivision	Appleby
City	Burlington (appleby)
Province	Ontario
Postal Code	L7L4C4

### Amenities

Amenities	Park, Public Transit, Place of Worship, Schools
Features	Carpet Free
Parking Spaces	3
Parking	No Garage

### Interior

Appliances	Dishwasher, Dryer, Stove, Washer, Window Coverings, Wine Fridge, Refrigerator
Heating	Natural gas Forced air
Cooling	Central air conditioning
Has Basement	Yes
Basement	Separate entrance

### Exterior

Exterior	Aluminum siding, Brick
Lot Description	68 x 105 FT
Foundation	Block

### Listing Details

Listing Office	RIGHT AT HOME REALTY
----------------	----------------------



The trademarks MLS®, Multiple Listing Service® and the associated logos are owned by The Canadian Real Estate Association (CREA) and identify the quality of services provided by real estate professionals who are members of CREA. REALTOR®. Member of CREA and more.

Listing information last updated on October 12th, 2025 at 7:31am PDT