

\$3,850,000 - 1160 Birchview Drive, Mississauga (Lorne Park)

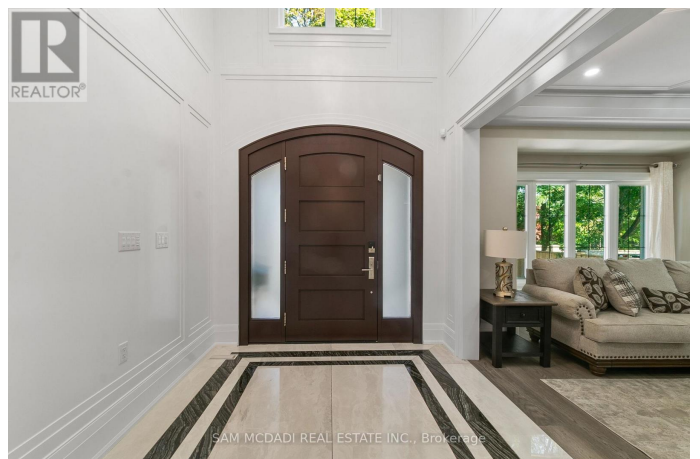
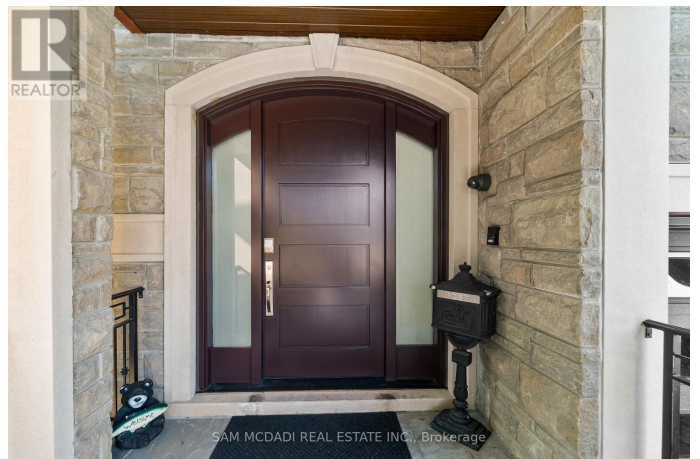
MLS® #W12457788

\$3,850,000

6 Bedroom, 7.00 Bathroom,
Single Family on 0.00 Acres

Lorne Park, Mississauga (Lorne Park), Ontario

This distinguished residence sits quietly on one of Lorne Park's most desirable streets, surrounded by mature trees and a true sense of privacy. With over 6,500 SF of finished living space, the home was designed for both family comfort and large-scale entertaining, boasting classic detailing with modern aesthetics. Inside, the grand foyer opens to light-filled living and dining rooms, framed by wainscoting, coffered ceilings, and rich hardwood floors. A chef's kitchen anchors the main level with quartz counters, an oversized island, walk-through servery, and a separate pantry, while the adjoining breakfast area and family room overlook the landscaped backyard. Multiple fireplaces add warmth and atmosphere, and custom millwork emphasizes sophistication throughout. A main-floor guest suite provides comfort and flexibility for extended family or visiting friends, while brand new impact-resistant windows filter in natural light and efficiency across the home. Upstairs, each of the four bedrooms offers a private ensuite and walk-in closet, creating retreats tailored for both family and guests. The primary suite is a sanctuary of its own, with a boutique-style dressing room and a spa-like ensuite featuring a freestanding tub, glass shower, and heated floors. The lower level extends the lifestyle with radiant heated floors, a recreation room with full bar, a home office, guest suite, and walk-up access to the



outdoors. The backyard is extraordinary in scale, complete with stone patios and a covered cabana with built-in BBQ that create endless entertaining possibilities, with space for a future pool, sport court, or tennis court. Equipped with Control4 home automation, built-in speakers, and two laundry rooms, every detail has been considered. The nearby amenities are equally impressive: top-ranked schools, boutique dining in Port Credit, lakefront trails, and hidden gems like Rattray Marsh are just minutes away. A perfect home for the discerning buyer! (id:6289)

Essential Information

Listing #	W12457788
Price	\$3,850,000
Bedrooms	6
Bathrooms	7.00
Acres	0.00
Type	Single Family
Sub-Type	Freehold

Community Information

Address	1160 Birchview Drive
Subdivision	Lorne Park
City	Mississauga (lorne Park)
Province	Ontario
Postal Code	L5H3C8

Amenities

Amenities	Golf Nearby, Park, Public Transit, Schools, Marina, Fireplace(s)
Features	Guest Suite
Parking Spaces	9
Parking	Garage
# of Garages	1

Interior

Appliances	Garage door opener remote(s), Oven - Built-In, Central Vacuum, Water
------------	--

Heater, Dishwasher, Oven, Hood Fan, Range, Window Coverings, Wine Fridge, Refrigerator

Heating	Natural gas Forced air
Cooling	Central air conditioning
Fireplace	Yes
# of Fireplaces	4
# of Stories	2
Basement	Separate entrance

Exterior

Exterior	Stone, Brick
Exterior Features	Landscaped
Lot Description	60 x 280 FT under 1/2 acre
Foundation	Poured Concrete

Listing Details

Listing Office SAM MCDADI REAL ESTATE INC.



The trademarks MLS®, Multiple Listing Service® and the associated logos are owned by The Canadian Real Estate Association (CREA) and identify the quality of services provided by real estate professionals who are members of CREA. REALTOR®. Member of CREA and more.

Listing information last updated on October 12th, 2025 at 6:31pm PDT