

\$1,195,000 - 418 - 3290 New Street, Burlington (roseland)

MLS® #W12457408

\$1,195,000

3 Bedroom, 2.00 Bathroom,
Single Family

Roseland, Burlington (roseland), Ontario

2 bed 2 bath open concept, 1700 sq ft unit located in Marantha Gardens, a 55+ life lease community near downtown Burlington with wheelchair access and great amenities including workshop, lounge, fitness and party rooms, terrace, underground parking and lockers. Open concept with engineered hardwood throughout, white kitchen with s/s appliances, dedicated laundry room, den, and private balcony overlooking park area. Primary ensuite with roll in shower + grab bars -wheelchair friendly. (id:6289)

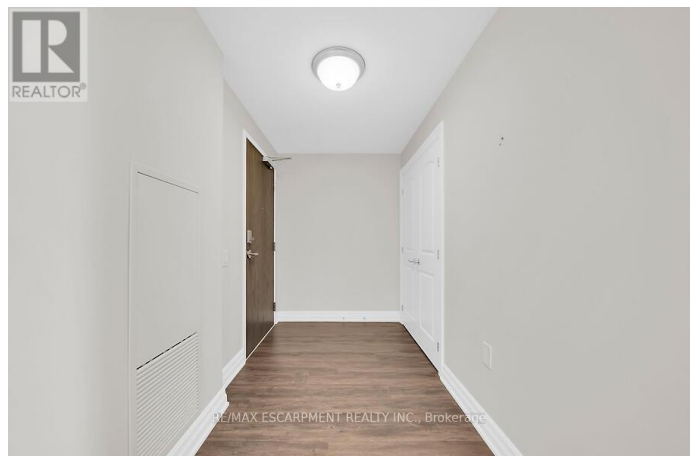
Essential Information

Listing #	W12457408
Price	\$1,195,000
Bedrooms	3
Bathrooms	2.00
Type	Single Family
Sub-Type	Condominium/Strata

Community Information

Address	418 - 3290 New Street
Subdivision	Roseland
City	Burlington (roseland)
Province	Ontario
Postal Code	L7N1M8

Amenities



Amenities	Park, Public Transit, Exercise Centre, Storage - Locker
Features	Elevator, Balcony, In suite Laundry, Guest Suite
Parking Spaces	1
Parking	Garage, Underground
# of Garages	1
View	View

Interior

Appliances	Garage door opener remote(s), Dishwasher, Dryer, Microwave, Stove, Washer, Window Coverings, Refrigerator
Heating	Natural gas Forced air
Cooling	Central air conditioning

Exterior

Exterior	Brick, Stone
Foundation	Poured Concrete

Listing Details

Listing Office RE/MAX ESCARPMENT REALTY INC.



The trademarks MLS®, Multiple Listing Service® and the associated logos are owned by The Canadian Real Estate Association (CREA) and identify the quality of services provided by real estate professionals who are members of CREA. REALTOR®. Member of CREA and more.

Listing information last updated on October 12th, 2025 at 3:18pm PDT