

\$1,318,000 - Th 41 - 3 Elsie Lane, Toronto (dovercourt-Wallace Emerson-Junction)

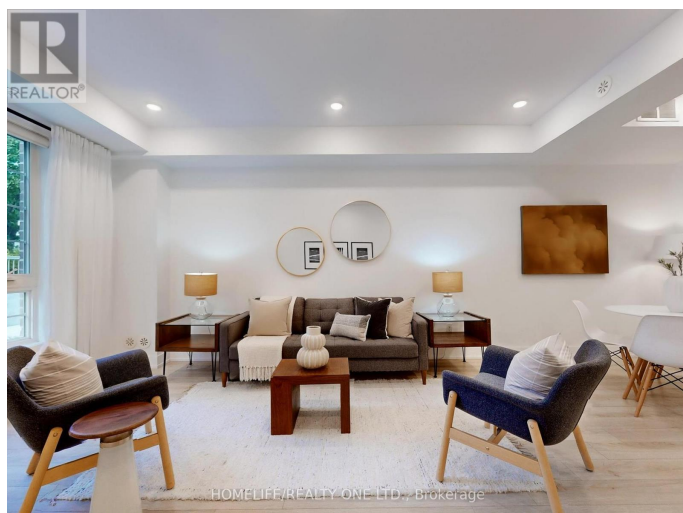
MLS® #W12457357

\$1,318,000

4 Bedroom, 3.00 Bathroom,
Single Family on 0.00 Acres

Dovercourt-Wallace Emerson-Junction,
Toronto (dovercourt-Wallace
Emerson-Junction), Ontario

Welcome Home * A Hidden Gem Nestled In A Quiet Enclave In The Heart Of Junction * This Freehold Townhome Defines Urban Chic Lifestyle * With Approximately 1600 Sq.Ft. of Thoughtfully Designed Living Space Across 3-Levels Plus Almost 270 Sq.Ft. Private Roof Top Terrace This Home Is Perfectly Suited For Both Family Living & Entertaining * Experience The Ideal Blend of Function, Style, Comfort Featuring Generous Room Sizes, Bathroom On Every Level, Ample Storage & Quality Finishes Throughout * The Impressive Open Plan Main Level Boasts Soaring Ceilings & Oversized Principal Room That Flows Seamlessly Into Ultra Sleek Kitchen With Light-Toned Finishes, Quartz Countertops, Breakfast Bar, & Convenient Powder Room * The Entire Second Floor Is Dedicated To Luxurious Primary Suite Complete With Walk-In Closet & Spa Inspired 5-Piece Ensuite Fitted With Dual Vanity & Large Wall-To-Wall Separate Shower * Third Level Features 2 Spacious Bedrooms & A Full 4-Piece Bathroom * Versatile Upper Level Also Offers Walk-Out Access To Sunny Roof Top Terrace Equipped With Water & Gas Hook-Up * Additional Conveniences include 2nd Level Laundry Room With Deep Laundry Tub, 1 Underground Parking & 1 Locker * Superb Location Steps To Bloor, Close To Roncy,



High Park, Vibrant Junction Triangle, Bloor
Line Subway & Go Station With All The
Amenities At Your Fingertips * Boutique Family
Friendly Complex, Walk, Bike & Pet Friendly *
This Home Presents An Exceptional
Opportunity To Embrace The Dynamic
Lifestyle of Junction In Low Maintenance
Setting. (id:6289)

Essential Information

Listing #	W12457357
Price	\$1,318,000
Bedrooms	4
Bathrooms	3.00
Half Baths	1
Acres	0.00
Type	Single Family
Sub-Type	Freehold

Community Information

Address	Th 41 - 3 Elsie Lane
Subdivision	Dovercourt-Wallace Emerson-Junction
City	Toronto (dovercourt-Wallace Emerson-Junction)
Province	Ontario
Postal Code	M6P0B8

Amenities

Amenities	Park, Public Transit, Schools, Separate Heating Controls
Parking Spaces	1
Parking	Garage
# of Garages	1

Interior

Appliances	Blinds, Dishwasher, Dryer, Freezer, Microwave, Hood Fan, Stove, Washer, Refrigerator
Heating	Natural gas Forced air
Cooling	Central air conditioning
# of Stories	3

Exterior

Exterior	Brick
Lot Description	13.8 x 34.6 FT
Foundation	Concrete

Listing Details

Listing Office HOMELIFE/REALTY ONE LTD.



The trademarks MLS®, Multiple Listing Service® and the associated logos are owned by The Canadian Real Estate Association (CREA) and identify the quality of services provided by real estate professionals who are members of CREA. REALTOR®. Member of CREA and more.

Listing information last updated on October 12th, 2025 at 7:01pm PDT