

\$999,900 - 907 Thistle Down Circle, Mississauga (creditview)

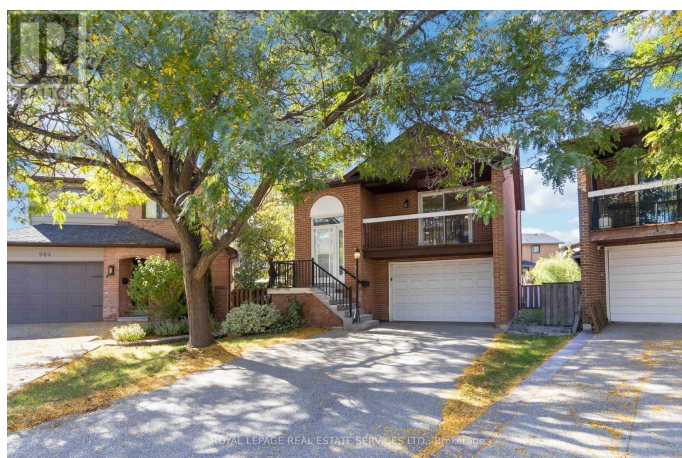
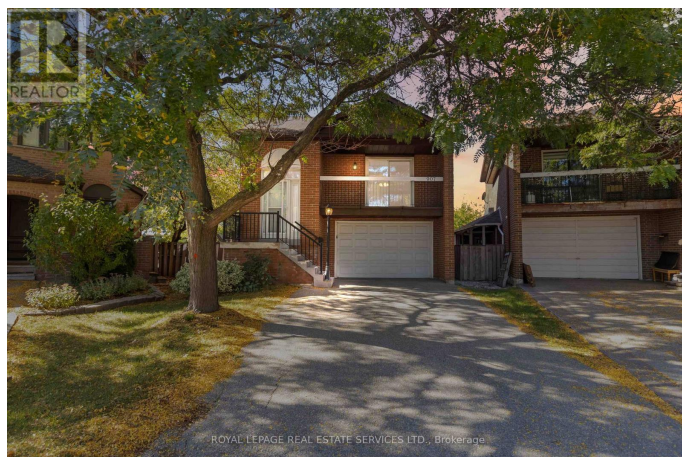
MLS® #W12456571

\$999,900

4 Bedroom, 2.00 Bathroom,
Single Family on 0.00 Acres

Creditview, Mississauga (creditview), Ontario

Fantastic detached family home located in Mississaugas highly sought-after Deer Run community, perfectly located on a quiet cul-de-sac with no through traffic. Set on a premium pie-shaped lot that widens at the back, the property is surrounded by mature trees and beautifully landscaped grounds. Inside, this inviting 4-bedroom, 2-bath five level backsplit boasts a bright, open-concept main floor with combined living and dining areas that walk out to a front balcony, and a sun-filled eat-in kitchen featuring stainless steel appliances, ample cabinetry, and vinyl flooring overlooking the family room. The ground floor offers a cozy family room with a wood-burning fireplace and sliding doors to the deck, a fourth bedroom, and a four-piece bathroom. Upstairs, the primary bedroom includes a double mirrored closet and ceiling fan, complemented by two additional bedrooms and another four-piece bath. The lower level features a laundry room with washer, dryer, and sink, while the basement provides an open-concept area with drywall and a mechanical room - ideal for future finishing. The backyard offers a spacious deck with built-in storage (completed 2015), providing the ideal space for relaxing or entertaining. Additional highlights include a 1.5-car garage, a 3-car driveway, recently painted and a prime location close to Square One, City Centre amenities, public transit, and



excellent schools offering elementary, middle, and high school programs. Pls note some photos have been virtually staged/renderings.
(id:6289)

Essential Information

Listing #	W12456571
Price	\$999,900
Bedrooms	4
Bathrooms	2.00
Acres	0.00
Type	Single Family
Sub-Type	Freehold

Community Information

Address	907 Thistle Down Circle
Subdivision	Creditview
City	Mississauga (creditview)
Province	Ontario
Postal Code	L5C3K5

Amenities

Amenities	Park, Place of Worship, Public Transit, Schools
Parking Spaces	4
Parking	Garage
# of Garages	1

Interior

Appliances	Dishwasher, Dryer, Microwave, Stove, Washer, Window Coverings, Refrigerator
Heating	Natural gas Forced air
Cooling	Central air conditioning
Fireplace	Yes

Exterior

Exterior	Brick
Lot Description	23.3 x 122.9 FT
Foundation	Poured Concrete

Listing Details

Listing Office ROYAL LEPAGE REAL ESTATE SERVICES LTD.



The trademarks MLS®, Multiple Listing Service® and the associated logos are owned by The Canadian Real Estate Association (CREA) and identify the quality of services provided by real estate professionals who are members of CREA. REALTOR®. Member of CREA and more.

Listing information last updated on October 15th, 2025 at 7:32am PDT