

\$1,398,888 - 5871 Long Valley Road E, Mississauga (churchill Meadows)

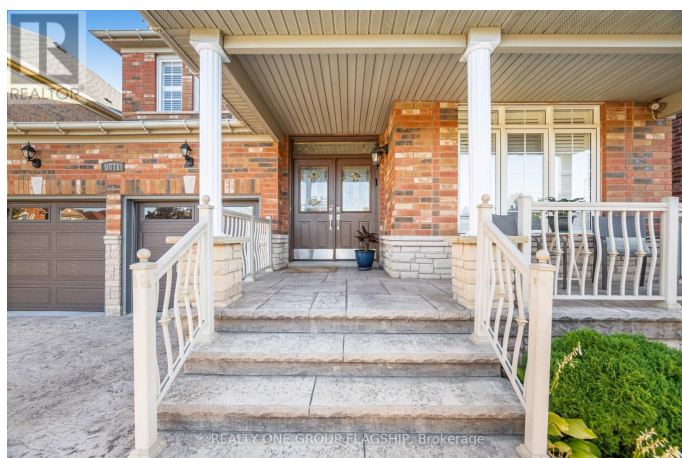
MLS® #W12455260

\$1,398,888

5 Bedroom, 4.00 Bathroom,
Single Family on 0.00 Acres

Churchill Meadows, Mississauga (churchill Meadows), Ontario

Upgraded Model Home Pride of Ownership! A Backyard Designed for Family Fun! Step into your very own mini golf-style oasis, perfect for entertaining, relaxing, and creating lasting memories. This upgraded 45 lot fronts onto Trafalgar/Common Park, offering both privacy and scenic views. Inside, the home is bright, sun-filled, and spacious, featuring 9 ceilings and Brazilian Mahogany hardwood floors throughout the living, dining, family areas, upstairs hallway, and all bedrooms. The professionally finished basement includes a 5th bedroom, 3-piece bathroom, and large entertainment area with electric fireplace, ideal for gatherings. Enjoy a fully upgraded interior with custom staircase, granite countertops, stainless steel appliances, upgraded light fixtures, and California shutters throughout. Additional highlights include custom patio, patterned concrete driveway, front steps, and walkway, central air, central vacuum, main floor laundry with garage access, spacious second-floor hallway, covered front porch facing west. This home is meticulously maintained, offering luxury, comfort, and a backyard made for fun. Floor plan available; see attachment for more details. (id:6289)



Essential Information

Listing #	W12455260
Price	\$1,398,888
Bedrooms	5
Bathrooms	4.00
Half Baths	1
Acres	0.00
Type	Single Family
Sub-Type	Freehold

Community Information

Address	5871 Long Valley Road E
Subdivision	Churchill Meadows
City	Mississauga (churchill Meadows)
Province	Ontario
Postal Code	L5M6J5

Amenities

Amenities	Park
Features	Carpet Free, Guest Suite
Parking Spaces	4
Parking	Attached Garage, Garage
# of Garages	2
View	View

Interior

Appliances	Central Vacuum, Water Heater, Water meter, Dryer, Stove, Washer, Water softener, Refrigerator
Heating	Natural gas Forced air
Cooling	Central air conditioning
Fireplace	Yes
# of Stories	2
Has Basement	Yes

Exterior

Exterior	Brick
Lot Description	45 x 85.3 FT ; 1 Of A Kind Bkyd-Putting Area + Patio!
Foundation	Block

Listing Details

Listing Office

REALTY ONE GROUP FLAGSHIP



The trademarks MLS®, Multiple Listing Service® and the associated logos are owned by The Canadian Real Estate Association (CREA) and identify the quality of services provided by real estate professionals who are members of CREA. REALTOR®. Member of CREA and more.

Listing information last updated on October 13th, 2025 at 1:46am PDT