

\$2,490,000 - 3185 Meadow Marsh Crescent, Oakville (jm Joshua Meadows)

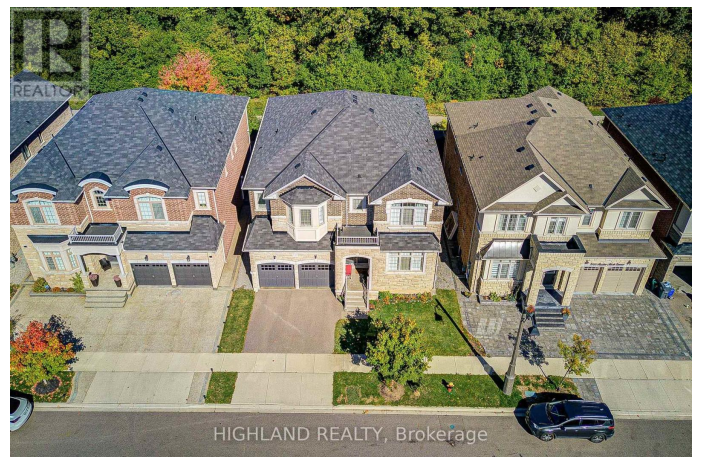
MLS® #W12455014

\$2,490,000

5 Bedroom, 4.00 Bathroom,
Single Family on 0.00 Acres

1010 - JM Joshua Meadows, Oakville (jm Joshua Meadows), Ontario

7-year-new luxurious detached home backing onto a serene ravine on a premium 50x97 ft lot with nearly 4,000 sq.ft (MPAC: 3,945 sq.ft). * Featuring 10-ft ceilings on the main floor, 9-ft ceilings on the 2nd floor and basement, 5 spacious bedrooms plus an office, 4 baths including 3 full on the 2nd floor, a 2.5-car garage, and a separate entrance lookout basement. * \$\$\$ spent on upgrades: hardwood flooring throughout the main floor, California shutters with elegant Roman drapes, \$100k upgraded on the chefs kitchen with oversized island, premium quartz countertops, JennAir built-in appliances, custom dining cabinetry with a beverage fridge, crown plaster ceilings (not MDF), and an upgraded designer fireplace * The luxurious primary suite includes a walk-in closet and spa-like ensuite with a frameless shower, free-standing tub, and custom vanity. * Functional design with dual basement access, side entrance, permit-approved enlarged basement windows, and proposed basement layout plan included. * 2.5 built-in garages with wood shelving and ceiling storage cabinets. * AAA Oakville location close to top-rated schools, parks, shopping plazas, and major highways. Enjoy the privacy and tranquility of ravine living in one of Oakvilles most desirable neighborhoods. (id:6289)



Essential Information

Listing #	W12455014
Price	\$2,490,000
Bedrooms	5
Bathrooms	4.00
Half Baths	1
Acres	0.00
Type	Single Family
Sub-Type	Freehold

Community Information

Address	3185 Meadow Marsh Crescent
Subdivision	1010 - JM Joshua Meadows
City	Oakville (jm Joshua Meadows)
Province	Ontario
Postal Code	L6H0T6

Amenities

Features	Flat site, Conservation/green belt
Parking Spaces	5
Parking	Attached Garage, Garage
# of Garages	2

Interior

Appliances	Central Vacuum, Dishwasher, Dryer, Water Heater, Stove, Washer, Window Coverings, Refrigerator
Heating	Natural gas Forced air
Cooling	Central air conditioning
Fireplace	Yes
# of Stories	2
Basement	Separate entrance

Exterior

Exterior	Stone, Brick
Lot Description	50 x 97.1 FT ; 97.68 x 50.08 x 96.68 x 50.11ft
Foundation	Concrete

Listing Details

Listing Office	HIGHLAND REALTY
----------------	-----------------



The trademarks MLS®, Multiple Listing Service® and the associated logos are owned by The Canadian Real Estate Association (CREA) and identify the quality of services provided by real estate professionals who are members of CREA. REALTOR®. Member of CREA and more.

Listing information last updated on October 13th, 2025 at 3:16am PDT