

# \$2,580,000 - 1197 Birchview Drive, Mississauga (Lorne Park)

---

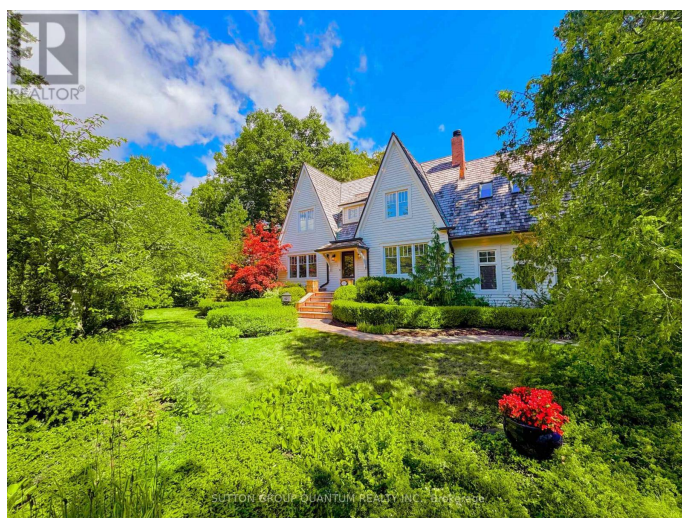
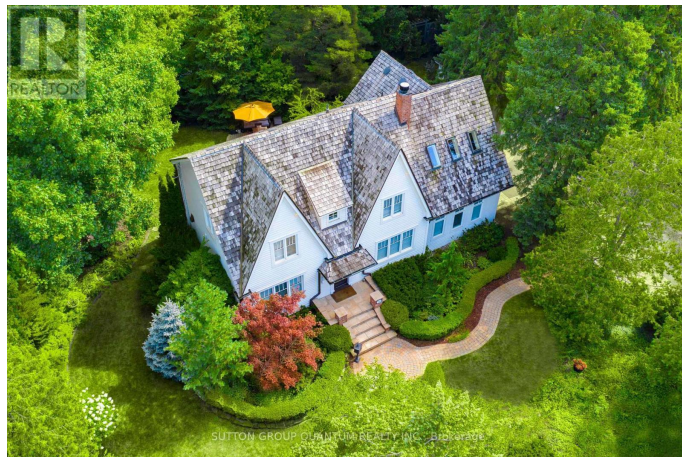
MLS® #W12453819

**\$2,580,000**

4 Bedroom, 3.00 Bathroom,  
Single Family on 0.00 Acres

Lorne Park, Mississauga (Lorne Park), Ontario

From time to time, a home is listed that stands out. Experience the charm & character of this fully redesigned Cape Cod home, nestled on a beautiful lot on highly desirable Birchview Drive in Lorne Park. Over 2500 sq ft of above grade, finished with the highest quality materials & crafted millwork. Featuring a Perola Kitchen with solid wood cabinetry, Caesarstone countertops, built ins, glass display cabinets, storage hutch, soft close drawers & pull outs, hidden pantry & under cabinet lighting. The main floor has a functional layout with a warm welcoming foyer with 2 custom built in coat closets & a library/office with French doors featuring solid wood bookcases, gas fireplace & custom mantle. The entire home is highlighted by beautiful rich hardwood floors, craftsman doorcasings, oversized baseboards & mouldings. The Sunken Family room has a wood burning fireplace, picture windows, 10ft coffered ceilings & glass doors opening out to the covered deck & backyard. Natural light fills this elegant home while oversized picture windows that frame the dense mature evergreens, flowering tree canopy and perennial gardens from every room. Multiple covered decks & sitting areas linked by stone walkways provide outdoor areas to enjoy the tranquility & privacy of this extensively landscaped property. Upstairs the primary bedroom retreat features a vaulted ceiling, 3



skylights, Juliette balcony, His & Her closets & a 5 piece, spa like ensuite, 3 additional bedrooms, a reading nook, laundry closet and a main bathroom with pocket doors. The basement has hardwood & above grade windows, cold storage & a laundry room as well as a cozy recreation room with gas fireplace, & a gym equipped with rubber flooring. The oversized detached garage provides ample parking for 2 cars, storage & workshop area with side entrance, electric garage door opener, 200 amp electrical service. Short walk to schools, shops, Lake & easy access to QEW & GO. A home like this rarely comes along! (id:6289)

**Essential Information**

Listing #	W12453819
Price	\$2,580,000
Bedrooms	4
Bathrooms	3.00
Half Baths	1
Acres	0.00
Type	Single Family
Sub-Type	Freehold

**Community Information**

Address	1197 Birchview Drive
Subdivision	Lorne Park
City	Mississauga (lorne Park)
Province	Ontario
Postal Code	L5H3E2

**Amenities**

Amenities	Public Transit, Schools, Fireplace(s)
Features	Level lot, Wooded area, Carpet Free
Parking Spaces	6
Parking	Detached Garage, Garage
# of Garages	2

## Interior

Appliances	Garage door opener remote(s), Central Vacuum, Water Heater, Dishwasher, Dryer, Humidifier, Microwave, Alarm System, Stove, Washer, Window Coverings, Refrigerator
Heating	Natural gas Forced air
Cooling	Central air conditioning
Fireplace	Yes
# of Fireplaces	3
# of Stories	2
Has Basement	Yes

## Exterior

Exterior	Wood
Lot Description	150 x 116.3 FT
Foundation	Block

## Listing Details

Listing Office SUTTON GROUP QUANTUM REALTY INC.



The trademarks MLS®, Multiple Listing Service® and the associated logos are owned by The Canadian Real Estate Association (CREA) and identify the quality of services provided by real estate professionals who are members of CREA. REALTOR®. Member of CREA and more.

Listing information last updated on October 14th, 2025 at 2:01am PDT