

\$1,195,000 - 548 Terrace Way, Oakville (sh Sixteen Hollow)

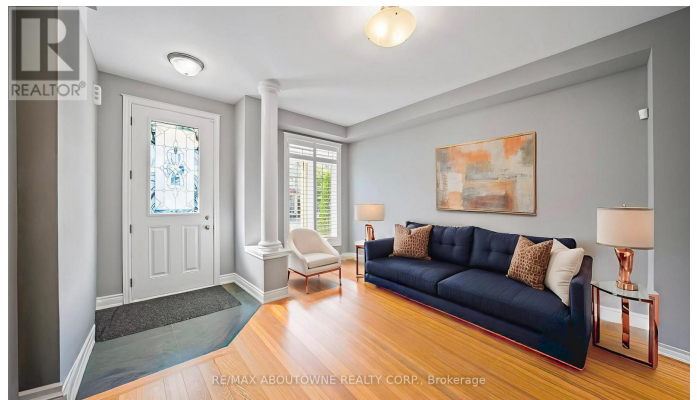
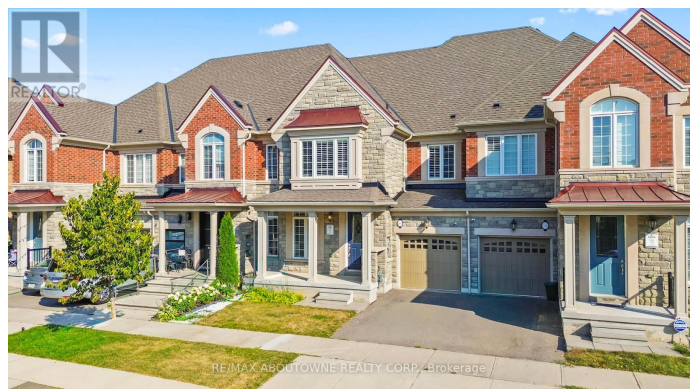
MLS® #W12412130

\$1,195,000

5 Bedroom, 4.00 Bathroom,
Single Family on 0.00 Acres

1016 - SH Sixteen Hollow, Oakville (sh Sixteen Hollow), Ontario

Sophisticated 4+1 bedroom, 3.5 bath freehold townhome by Rosehaven Homes, nestled in a prestigious North Oakville pocket. Tailored for today's lifestyle, the main floor showcases soaring 9-foot ceilings, wide-plank engineered hardwood, and an airy living space. The welcoming family room offers a coffered ceiling and a warm gas fireplace perfect for relaxing evenings. A well-planned laundry area provides inside entry to the garage for everyday convenience. The chef's kitchen is equipped with a pantry, raised breakfast bar, and stainless steel appliances, seamlessly connecting to the dining area with French door access to the deck ideal for enjoying a quiet morning coffee. Upstairs, the primary retreat impresses with a 9-foot coffered ceiling, walk-in closet, and a spa-like five-piece ensuite featuring double vanities and a deep soaker tub. Three additional bedrooms share a bright four-piece main bath. The professionally finished lower level adds valuable living space, complete with a recreation room, gym, laminate flooring, and a fifth bedroom with ensuite privilege to a sleek three-piece bathroom. Ample storage keeps everything neatly organized. Enhanced by thoughtful upgrades, the home boasts oversized windows, California shutters, upgraded trim and doors, in-ceiling speakers, oak staircases, exterior coach lights, and an rough-in for an



EV charging unit. Located in a vibrant, family-oriented community, your are steps from Kings Christian Collegiate and minutes from Sixteen Mile Sports Complex, trails, parks, excellent schools ,shopping, dining, the hospital, and key commuter routes. This home delivers both elegance and practicality in one remarkable package.**Virtually staged pictures** (id:6289)

Essential Information

Listing #	W12412130
Price	\$1,195,000
Bedrooms	5
Bathrooms	4.00
Half Baths	1
Acres	0.00
Type	Single Family
Sub-Type	Freehold

Community Information

Address	548 Terrace Way
Subdivision	1016 - SH Sixteen Hollow
City	Oakville (sh Sixteen Hollow)
Province	Ontario
Postal Code	L6M1N6

Amenities

Amenities	Golf Nearby, Hospital, Park, Schools, Fireplace(s)
Features	Conservation/green belt
Parking Spaces	2
Parking	Attached Garage, Garage
# of Garages	2

Interior

Appliances	Garage door opener remote(s), Central Vacuum, Dishwasher, Dryer, Garage door opener, Humidifier, Range, Washer, Window Coverings, Refrigerator
Heating	Natural gas Forced air

Cooling	Central air conditioning
Fireplace	Yes
# of Fireplaces	1
# of Stories	2
Has Basement	Yes

Exterior

Exterior	Brick
Lot Description	24.8 x 95.7 FT
Foundation	Poured Concrete

Listing Details

Listing Office RE/MAX ABOUTOWNE REALTY CORP.



The trademarks MLS®, Multiple Listing Service® and the associated logos are owned by The Canadian Real Estate Association (CREA) and identify the quality of services provided by real estate professionals who are members of CREA. REALTOR®. Member of CREA and more.

Listing information last updated on October 14th, 2025 at 3:16am PDT