

\$1,149,000 - 11 Powerhouse Street, Toronto (dovercourt-Wallace Emerson-Junction)

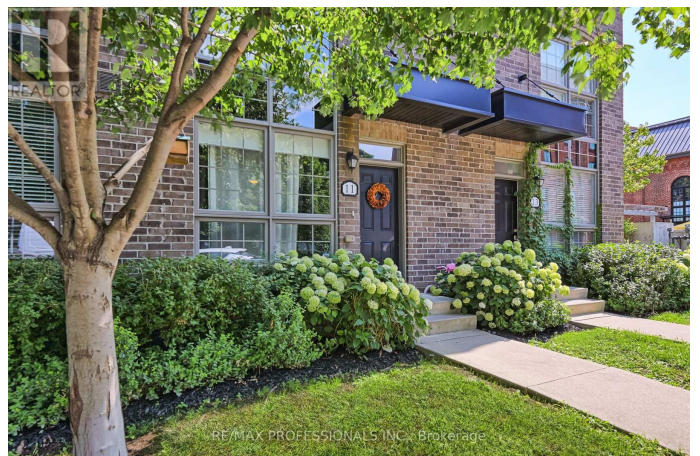
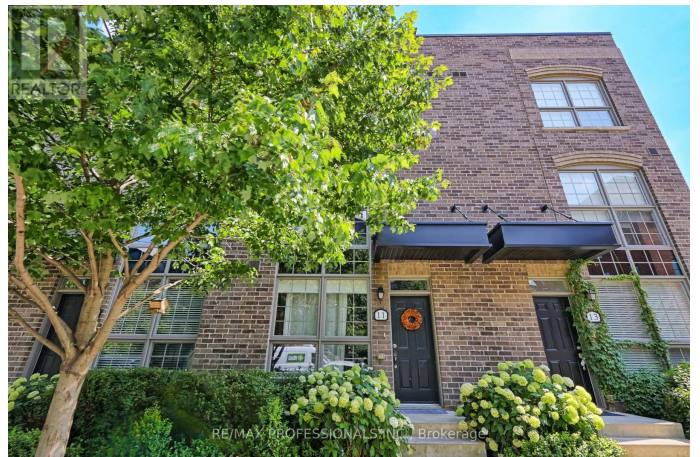
MLS® #W12305691

\$1,149,000

3 Bedroom, 3.00 Bathroom,
Single Family on 16.40 Acres

Dovercourt-Wallace Emerson-Junction,
Toronto (dovercourt-Wallace
Emerson-Junction), Ontario

Welcome To 11 Powerhouse Street A Stunning Freehold Townhome Located In The Heart Of The Junction . This Modern Residence Offers The Perfect Blend Of Style, Comfort, And Urban Convenience, With Four Thoughtfully Designed Levels Of Living Space.Enjoy Your Own Private Rooftop Patio Ideal For Relaxing Or Entertaining With Unobstructed Sunset Views.Designed With Both Families And Entertainers In Mind,....This Spacious Home Features Generous Principal Rooms, Three-Plus-One Bedrooms Spread Across Multiple Levels, Great Storage, And Premium Finishes Throughout.The Main Floor Impresses With Lofty Ceilings And An Open-Concept Layout, Seamlessly Connecting A Generous Living Area To A Contemporary Kitchen Complete With Quartz Countertops, A Stylish Breakfast Bar, And An Expansive Dining Space All Complemented By A Convenient Powder Room.Occupying The Entire Second Floor, The Sophisticated Primary Retreat Offers Both Privacy And Comfort. It Includes Two Spacious Walk-In Closets And A Beautifully Appointed 5-Piece Ensuite With Double Sinks, A Separate Glass Shower, And A Bath Tub The Perfect Place To Unwind.The Third Floor Features Two Bedrooms, A 3-Piece Bathroom, A Walk-In Closet, And A Convenient Laundry Room.On



The Fourth Level, You'll Find A Versatile Rooms That Can Be Used As Offices Or Additional Bedrooms. This Uppermost Floor Also Offers A Flexible Loft-Style Area With Direct Access To The Rooftop Terrace Ideal For A Home Office, Guest Suite, Or Relaxation Zone. One Underground parking & locker . Located In A Prime Area Close To Everything You Could Dream Of Shops, Restaurants, Parks, Transit, And More This Home Truly Has It All. (id:6289)

Essential Information

Listing #	W12305691
Price	\$1,149,000
Bedrooms	3
Bathrooms	3.00
Half Baths	1
Acres	16.40
Type	Single Family
Sub-Type	Freehold

Community Information

Address	11 Powerhouse Street
Subdivision	Dovercourt-Wallace Emerson-Junction
City	Toronto (dovercourt-Wallace Emerson-Junction)
Province	Ontario
Postal Code	M6H4K4

Amenities

Features	Lane
Parking Spaces	1
Parking	Detached Garage, Garage
# of Garages	2

Interior

Heating	Natural gas Forced air
Cooling	Central air conditioning
# of Stories	3

Exterior

Exterior	Brick
Foundation	Concrete

Listing Details

Listing Office RE/MAX PROFESSIONALS INC.



The trademarks MLS®, Multiple Listing Service® and the associated logos are owned by The Canadian Real Estate Association (CREA) and identify the quality of services provided by real estate professionals who are members of CREA. REALTOR®. Member of CREA and more.

Listing information last updated on October 14th, 2025 at 11:46pm PDT