

\$559,000 - 428 - 60 Heintzman Street, Toronto (junction Area)

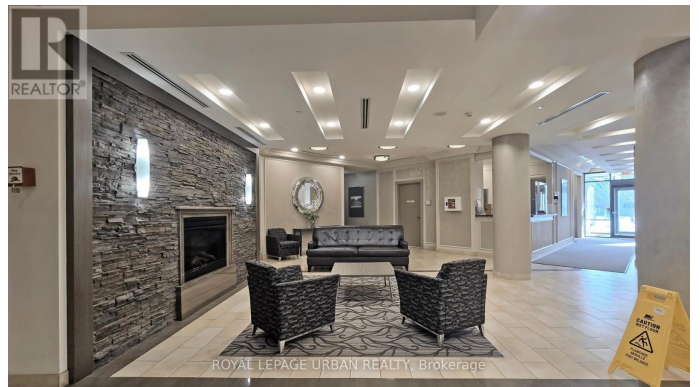
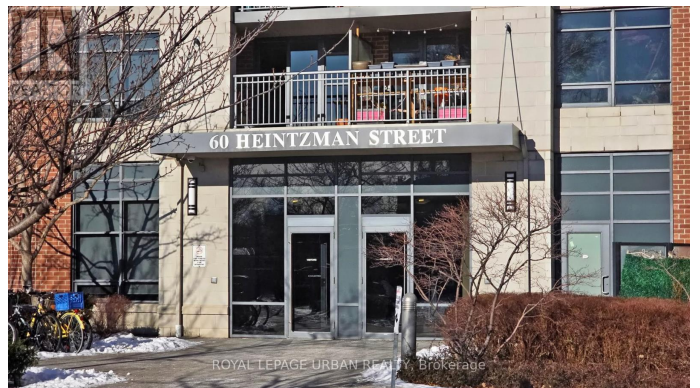
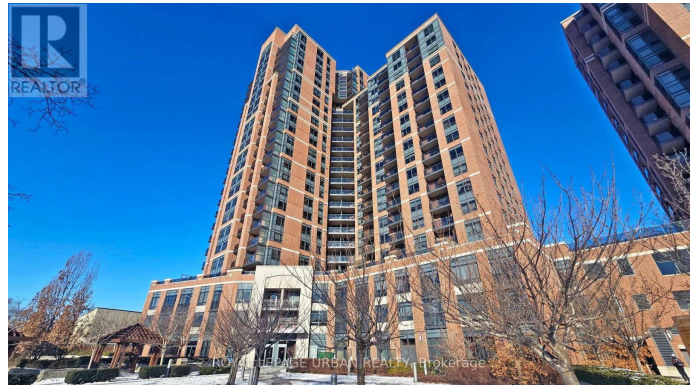
MLS® #W12304227

\$559,000

2 Bedroom, 1.00 Bathroom,
Single Family

Junction Area, Toronto (junction Area), Ontario

Rarely Offered! Stunning 1+1 Unit Featuring Your Own Private Patio-Terrace and a Spacious, Open-Concept Living and Dining Area, Located in the Highly Desirable Heintzman Place With Its Welcoming Community. This Beautiful Home Includes Owned Parking And A Large Den Enclosed By Mirrored Sliding Doors, Offering the Perfect Blend of Comfort, Convenience and Low Maintenance Fees. You Will Enjoy Exceptional Amenities, Including a Concierge, Security, A Library With Free Wifi And Walkout To The Outdoor BBQ-Terrace Located On Your (4th) Floor, Party Room, Yoga Room, Gym and More, All While Being Steps from Local Shops, Trendy Dining, Bars, Cozy Cafes, Convenient Transit Options, and the Vibrant Culture of The Junction. Don't Miss This Incredible Opportunity To Add Your Personal Touch and Experience Urban Living At Its Finest!
(id:6289)



Essential Information

Listing #	W12304227
Price	\$559,000
Bedrooms	2
Bathrooms	1.00
Type	Single Family
Sub-Type	Condominium/Strata

Community Information

Address	428 - 60 Heintzman Street
Subdivision	Junction Area
City	Toronto (junction Area)
Province	Ontario
Postal Code	M6P5A1

Amenities

Amenities	Hospital, Schools, Security/Concierge, Exercise Centre, Party Room, Visitor Parking
Features	In suite Laundry
Parking Spaces	1
Parking	Garage, Underground
# of Garages	1

Interior

Heating	Natural gas Forced air
Cooling	Central air conditioning

Exterior

Exterior	Brick
----------	-------

Listing Details

Listing Office	ROYAL LEPAGE URBAN REALTY
----------------	---------------------------



The trademarks MLS®, Multiple Listing Service® and the associated logos are owned by The Canadian Real Estate Association (CREA) and identify the quality of services provided by real estate professionals who are members of CREA. REALTOR®. Member of CREA and more.

Listing information last updated on October 14th, 2025 at 7:01pm PDT