

\$2,075 - 148 Lambton Avenue, Toronto (rockcliffe-Smythe)

MLS® #W12298926

\$2,075

2 Bedroom, 1.00 Bathroom,
Single Family

Rockcliffe-Smythe, Toronto
(rockcliffe-Smythe), Ontario

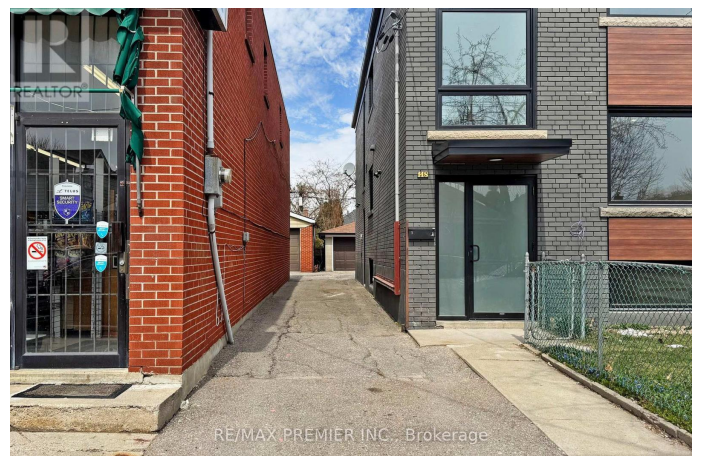
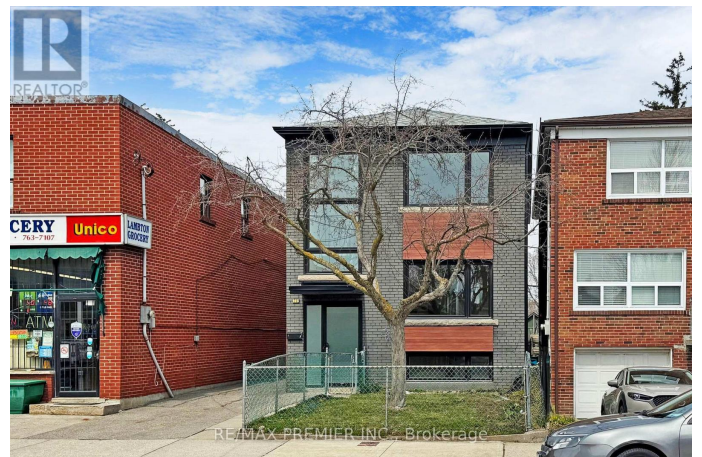
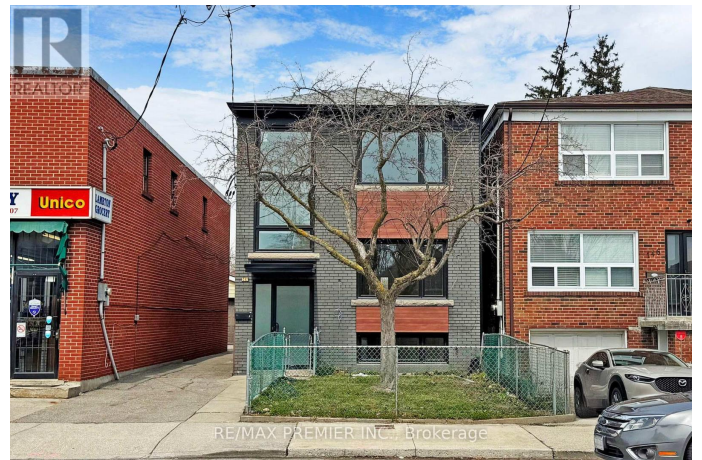
Newly renovated 2 bedroom basement apartment at Jane & Eglinton featuring a bright living area with potlights, a large window and laminate flooring. The modern kitchen offers a large quartz countertop, undercounter lighting, and stainless steel appliances. The stylish bathroom includes a quartz vanity, rainfall shower, and glass tile enclosure. Both bedrooms feature large windows, built-in closets and potlights. Enjoy a private entrance and access to onsite coin-operate laundry. Conveniently located on a bus route and close to schools, shopping and places of worship - this unit is perfect for comfortable, convenient living! (id:6289)

Essential Information

Listing #	W12298926
Price	\$2,075
Bedrooms	2
Bathrooms	1.00
Type	Single Family
Sub-Type	Condominium/Strata

Community Information

Address	148 Lambton Avenue
Subdivision	Rockcliffe-Smythe
City	Toronto (rockcliffe-Smythe)



Province	Ontario
Postal Code	M6N2S9

Amenities

Amenities	Place of Worship, Public Transit, Schools, Separate Heating Controls
Features	Carpet Free, Laundry- Coin operated
Parking	Detached Garage, No Garage
# of Garages	1

Interior

Heating	Natural gas Forced air
Cooling	Central air conditioning
Basement	Apartment in basement

Exterior

Exterior	Brick
----------	-------

Listing Details

Listing Office	RE/MAX PREMIER INC.
----------------	---------------------



The trademarks MLS®, Multiple Listing Service® and the associated logos are owned by The Canadian Real Estate Association (CREA) and identify the quality of services provided by real estate professionals who are members of CREA. REALTOR®. Member of CREA and more.

Listing information last updated on October 13th, 2025 at 3:17pm PDT