

\$1,699,900 - 972 Winterton Way, Mississauga (east Credit)

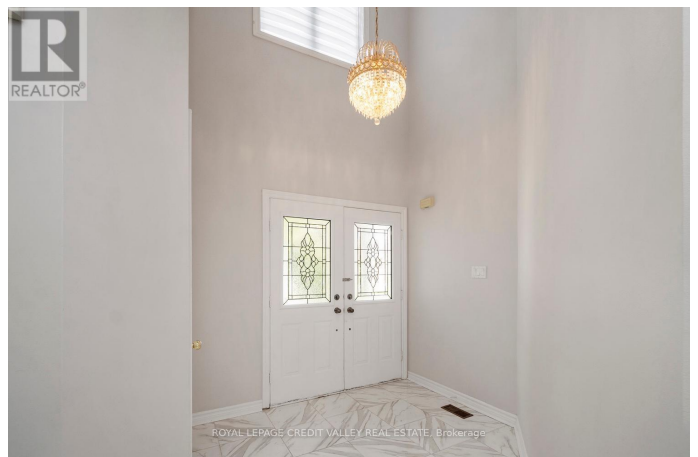
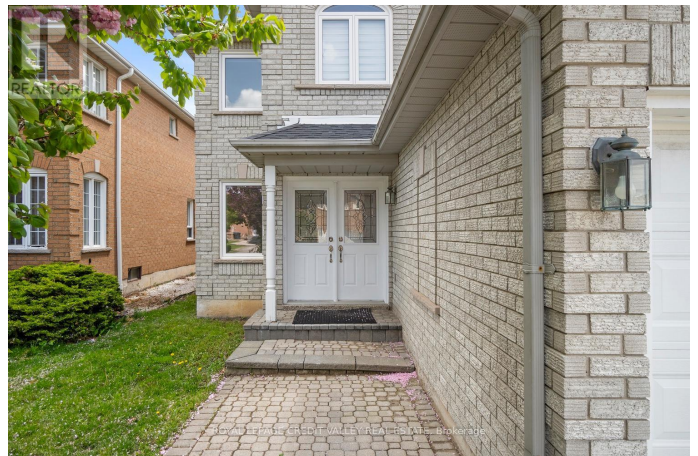
MLS® #W12297136

\$1,699,900

7 Bedroom, 5.00 Bathroom,
Single Family on 0.00 Acres

East Credit, Mississauga (east Credit), Ontario

Welcome to your dream residence nestled in a highly sought-after area of Mississauga, where luxury living meets natural beauty. This stunning detached home backs onto a picturesque park, ensuring both tranquility and convenience. A double door entrance invites you to step into a grand foyer that sets the tone for the elegance found throughout. Freshly repainted and updated from top to bottom, this home offers an efficient layout designed with practicality and style in mind, maximizing space and functionality for modern living. The heart of the home, the chef's kitchen, impresses with stainless steel appliances, a sprawling center island, and convenient access to the backyard, perfect for entertaining or enjoying family meals amidst serene surroundings. Work from home in style with the dedicated main floor office, providing a quiet and inspiring space for productivity. Hardwood floors adorn the main level, complemented by a solid oak staircase, while high ceilings add an airy feel to the living spaces, creating an atmosphere of grandeur and sophistication. Upstairs you'll find 4 spacious bedrooms and 4 washrooms on the upper levels including rarely offered 2 ensuite, a huge primary bedroom with a walk-in closet and a completely renovated 4 piece bath with freestanding tub, comfort and privacy are guaranteed for all family members. The fully finished basement adds additional



living space, boasting two bedrooms, kitchen, a 3 piece washroom, storage, utility room and a separate entrance, offering endless possibilities for guests, extended family, or even rental income. Step outside into your own private retreat, where the interlocking brick driveway sets the stage for curb appeal, while the backyard offers a sanctuary for relaxation and enjoyment, surrounded by mature trees and the natural beauty of the parkland beyond. (id:6289)

Essential Information

Listing #	W12297136
Price	\$1,699,900
Bedrooms	7
Bathrooms	5.00
Half Baths	1
Acres	0.00
Type	Single Family
Sub-Type	Freehold

Community Information

Address	972 Winterton Way
Subdivision	East Credit
City	Mississauga (east Credit)
Province	Ontario
Postal Code	L5V1M6

Amenities

Amenities	Park, Place of Worship, Public Transit, Schools
Features	Carpet Free
Parking Spaces	4
Parking	Attached Garage, Garage
# of Garages	2
View	View

Interior

Heating	Natural gas Forced air
---------	------------------------

Cooling	Central air conditioning
# of Stories	2
Has Basement	Yes

Exterior

Exterior	Brick
Lot Description	40 x 111.6 FT
Foundation	Unknown

Listing Details

Listing Office	ROYAL LEPAGE CREDIT VALLEY REAL ESTATE
----------------	--



The trademarks MLS®, Multiple Listing Service® and the associated logos are owned by The Canadian Real Estate Association (CREA) and identify the quality of services provided by real estate professionals who are members of CREA. REALTOR®. Member of CREA and more.

Listing information last updated on October 13th, 2025 at 10:01am PDT