

\$799,000 - 1 Hwy 17, Coldwell Twp

MLS® #TB243514

\$799,000

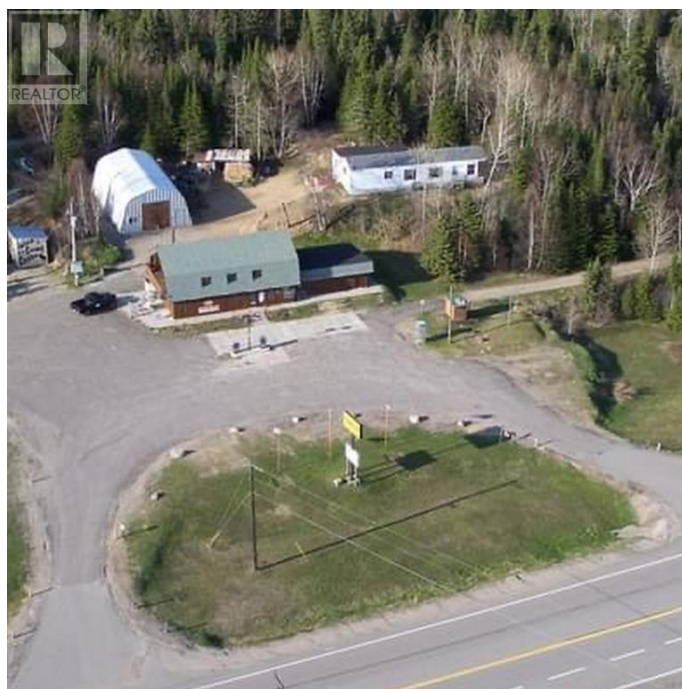
0 Bedroom, 0.00 Bathroom, 3,000 sqft
Other on 6.90 Acres

COLDWELL TWP, Coldwell Twp, Ontario

Situated directly across from the Neys Provincial Park on Hwy 17 just 25 kilometers west of Marathon, this 6.9 acre property offers a picturesque setting with mature trees and serene surroundings. Deciding whether to keep the property as your own residential space or reopen it as a business depends on your personal preferences, financial goals, and lifestyle choices. The main living quarters provide comfortable accommodation for the owner or caretaker, while a separate modular home with two bedrooms and a spacious deck offers additional living space and income. Outdoor enthusiasts will appreciate the campground facilities, including two cozy Bunkie's and a wild game cooler for preserving freshly caught game. The property also features a large garage, comfort station, and designated trailer storage area, catering to various recreational needs. A transferrable 4-acre land use permit adds value, providing room for storage and pump house access. For more information, visit www.chrisjoubert.ca. (id:6289)

Essential Information

Listing #	TB243514
Price	\$799,000
Bathrooms	0.00
Square Footage	3,000
Acres	6.90



Type Other

Community Information

Address 1 Hwy 17
Subdivision COLDWELL TWP
City Coldwell Twp
Province Ontario
Postal Code P0T2E0

Amenities

Utilities Electricity, Telephone
Parking Gravel

Interior

Heating Electric, Pellet Baseboard heaters, Radiant/Infra-red Heat

Exterior

Foundation Poured Concrete

Listing Details

Listing Office ROYAL LEPAGE LANNON REALTY



The trademarks MLS®, Multiple Listing Service® and the associated logos are owned by The Canadian Real Estate Association (CREA) and identify the quality of services provided by real estate professionals who are members of CREA. REALTOR®. Member of CREA and more.

Listing information last updated on October 15th, 2025 at 10:16am PDT