

\$375,000 - Hart Butte Quarter, Hart Butte Rm No. 11

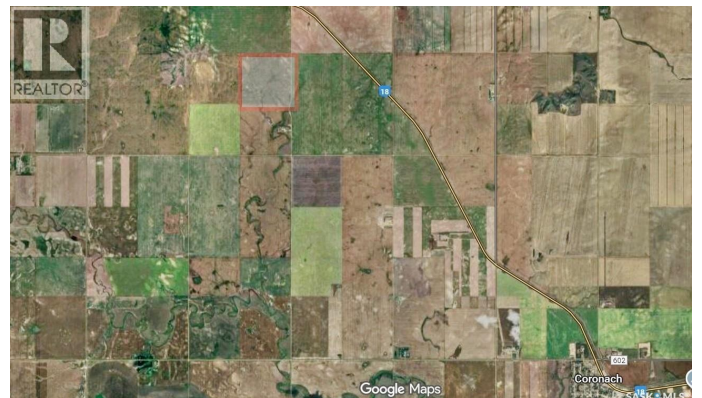
MLS® #SK020686

\$375,000

0 Bedroom, 0.00 Bathroom,
Agriculture on 160.00 Acres

N/A, Hart Butte Rm No. 11, Saskatchewan

RM Hart Butte No. 11 - NE 30-2-27 W2 160 acres, 158 cultivated SAMA acres. Soil class J, Assessment 252,400. High assessed land, with some stones, no sloughs and no alkaline. Investment opportunity or add to your farm land base with one quarter of grain land. Located 5 1/2 Miles North and 1/2 Miles South of Coronach. (id:6289)



Essential Information

Listing #	SK020686
Price	\$375,000
Bathrooms	0.00
Acres	160.00
Type	Agriculture

Community Information

Address	Hart Butte Quarter
Subdivision	N/A
City	Hart Butte Rm No. 11
Province	Saskatchewan
Postal Code	S0H0Z0

Amenities

Features	Rolling, No bush
----------	------------------

Listing Details

Listing Office	Great Plains Realty Inc.
----------------	--------------------------



The trademarks MLS®, Multiple Listing Service® and the associated logos are owned by The Canadian Real Estate Association (CREA) and identify the quality of services provided by real estate professionals who are members of CREA. REALTOR®. Member of CREA and more.

Listing information last updated on October 13th, 2025 at 6:31am PDT