

# \$749,900 - 3023 Wimbledon Drive, Regina

MLS® #SK020465

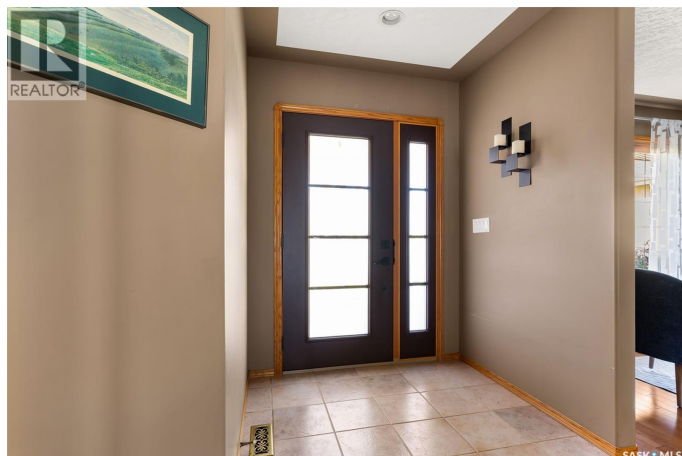
**\$749,900**

4 Bedroom, 4.00 Bathroom, 2,173 sqft

Single Family on 0.13 Acres

Windsor Park, Regina, Saskatchewan

Welcome to 3023 Wimbledon Drive – A Rare Find in Windsor Park! Situated in one of Regina's most sought-after neighborhoods, this beautifully maintained family home backs onto green space and a walking path, offering privacy, tranquility, and convenience. Just steps from Jack Mackenzie and St. Gabriel Schools, as well as the Sandra Schmirler Leisure Centre, pool, library, and water park, the location is truly unbeatable! Step inside to discover over 2,100 sq. ft. of thoughtfully designed living space, featuring: a 24' x 24' fully finished double attached garage with radiant heat and floor drain – ideal for our Saskatchewan winters. A spacious front entry leading into a warm and inviting front living and formal dining room, complete with hardwood floors. A custom oak kitchen with centre island, walk-in pantry, under/over-cabinet lighting, ceramic tile flooring, corner sink, and direct access to the deck overlooking the park – perfect for entertaining or relaxing with family. Vaulted ceilings in the kitchen and adjoining family room, peaking at 14 feet for an airy, open feel. A convenient main floor office/den, 2 piece bathroom and laundry room with sink. Upstairs, you'll find: Three spacious bedrooms, including a primary suite with a large walk-in closet and luxurious ensuite featuring a corner shower and separate tub. A built-in desk in the second bedroom – perfect for students or a home office setup. The fully finished basement offers exceptional bonus space with a rec



room featuring a gas fireplace, wet bar, games area, additional bedroom, full bathroom, and your very own sauna! Recent upgrades include: New front and back doors (2019), Shingles (2020), Two furnaces (2021), Central air conditioning (2021). This home is an absolute gem – perfect for families, entertainers, and anyone looking for a great home in a prime location. (id:6289)

Built in 1996

**Essential Information**

Listing #	SK020465
Price	\$749,900
Bedrooms	4
Bathrooms	4.00
Square Footage	2,173
Acres	0.13
Year Built	1996
Type	Single Family
Sub-Type	Freehold
Style	2 Level

**Community Information**

Address	3023 Wimbledon Drive
Subdivision	Windsor Park
City	Regina
Province	Saskatchewan
Postal Code	S4V2Y2

**Amenities**

Features	Treed, Rectangular, Double width or more driveway
Parking	Attached Garage, Heated Garage, Parking Space(s)
# of Garages	1

**Interior**

Appliances	Washer, Refrigerator, Dishwasher, Dryer, Microwave, Alarm System, Freezer, Garburator, Window Coverings, Garage door opener remote(s), Hood Fan, Storage Shed, Stove
------------	----------------------------------------------------------------------------------------------------------------------------------------------------------------------

Heating	Natural gas Forced air
Cooling	Central air conditioning
Fireplace	Yes
Fireplaces	Gas
# of Stories	2
Has Basement	Yes

## Exterior

Exterior Features    Lawn, Underground sprinkler

## Listing Details

Listing Office        Century 21 Dome Realty Inc.



The trademarks MLS®, Multiple Listing Service® and the associated logos are owned by The Canadian Real Estate Association (CREA) and identify the quality of services provided by real estate professionals who are members of CREA. REALTOR®. Member of CREA and more.

Listing information last updated on October 13th, 2025 at 1:31am PDT