

\$329,900 - 345 Aspen Drive, Swift Current

MLS® #SK015425

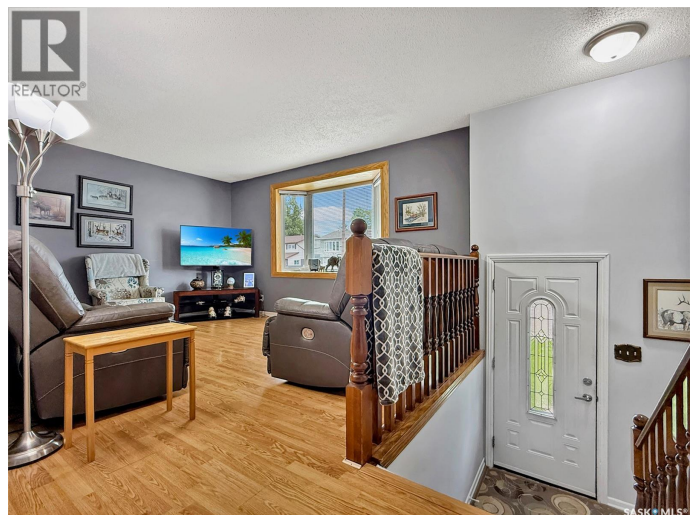
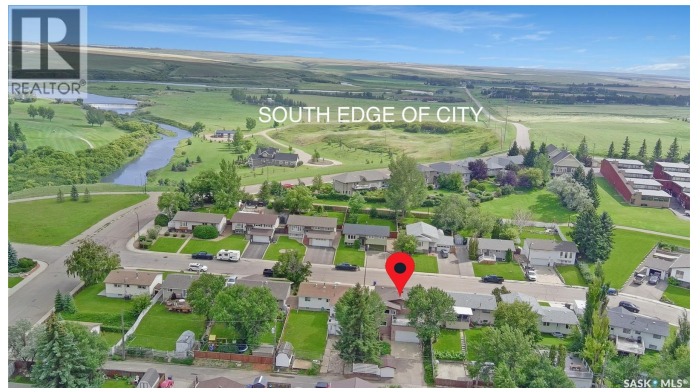
\$329,900

4 Bedroom, 3.00 Bathroom, 1,156 sqft

Single Family on 0.13 Acres

South East SC, Swift Current, Saskatchewan

Discover this meticulously maintained property with breathtaking views, owned and lovingly updated by the same owner for over 19 years. Upon entering, you're welcomed by a front living room leading to an expansive kitchen and dining area. This kitchen is a dream for bakers, with new windows framing the stunning city skyline. It boasts abundant quality cabinetry and an oversized island with Pull out drawers, perfect for storing even the largest baking collections. The L-shaped design offers ample workspace, complemented by main floor laundry hookups, a spacious dining area with a built-in desk, and a pantry. Step through the dining room doors onto a 16 x 18 ft deck, complete with a natural gas barbecue and updated railing, providing a perfect spot to enjoy the beautifully landscaped yard and 5 star city views. Adjacent sits the south facing living room boasting plenty of natural light! Down the hall, you'll find two generously sized bedrooms. The master bedroom features a two-piece ensuite. A four-piece bathroom completes this level. The basement extends the living space with a family room and two additional large bedrooms, all with oversized windows for abundant natural light. A utility room offers additional storage and features such as a water softener, central vacuum, and central air conditioning. Many windows have been upgraded to PVC, and a significant addition in 1988 includes a 20'6" by 22'8" insulated 2 car garage with direct home access. Located



steps from walking paths and blocks from the creek, Chinook Golf Course, and walking distance to a K-8 school, skating rinks, outdoor pool, a grocery store, and numerous parks, this area is unparalleled. The garage comes equipped with a workbench and extra shelving. The property includes six off-street parking spaces, two on the front driveway with trailer parking availability, a second driveway in the back, freshly shingled, shed, and beautifully manicured yard. Call today to book your personal viewing! (id:6289)

Built in 1973

Essential Information

Listing #	SK015425
Price	\$329,900
Bedrooms	4
Bathrooms	3.00
Square Footage	1,156
Acres	0.13
Year Built	1973
Type	Single Family
Sub-Type	Freehold
Style	Bi-level

Community Information

Address	345 Aspen Drive
Subdivision	South East SC
City	Swift Current
Province	Saskatchewan
Postal Code	S9H3Z8

Amenities

Features	Treed
Parking	Attached Garage, Parking Space(s), RV
# of Garages	1

Interior

Appliances	Refrigerator, Dishwasher, Window Coverings, Garage door opener remote(s), Hood Fan, Storage Shed, Stove
Heating	Natural gas Forced air
Cooling	Central air conditioning
Has Basement	Yes

Exterior

Exterior Features	Lawn, Garden Area
-------------------	-------------------

Listing Details

Listing Office	RE/MAX of Swift Current
----------------	-------------------------



The trademarks MLS®, Multiple Listing Service® and the associated logos are owned by The Canadian Real Estate Association (CREA) and identify the quality of services provided by real estate professionals who are members of CREA. REALTOR®. Member of CREA and more.

Listing information last updated on October 15th, 2025 at 3:16am PDT