

\$339,900 - 3116 Grey Owl Crescent, Prince Albert

MLS® #SK014870

\$339,900

3 Bedroom, 3.00 Bathroom, 2,112 sqft

Single Family on 0.17 Acres

Carlton Park, Prince Albert, Saskatchewan

Conveniently located in Carlton Park, this home is the perfect fixer upper. In close proximity to Carlton Comprehensive High School, St Catherine, John Diefenbaker School, and backing onto green space, this 3 bed 3 bath home has tons of potential. With 2112 sq/ft and a 24x26 insulated attached garage, you have a blank canvas with many possibilities. Call your Realtor today! (id:6289)

Built in 1978

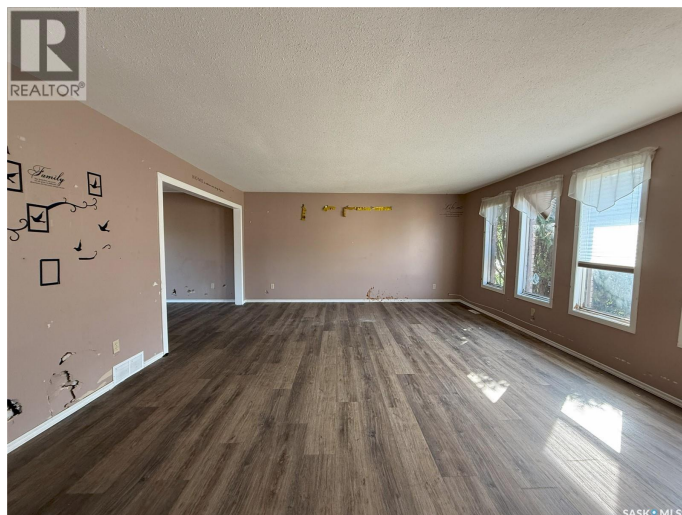
Essential Information

Listing #	SK014870
Price	\$339,900
Bedrooms	3
Bathrooms	3.00
Square Footage	2,112
Acres	0.17
Year Built	1978
Type	Single Family
Sub-Type	Freehold

Community Information

Address	3116 Grey Owl Crescent
Subdivision	Carlton Park
City	Prince Albert
Province	Saskatchewan
Postal Code	S6V6X4

Amenities



Features	Treed, Rectangular, Double width or more driveway
Parking	Attached Garage, Parking Space(s)
# of Garages	1

Interior

Heating	Natural gas Forced air
Fireplace	Yes
Fireplaces	Wood
Has Basement	Yes

Exterior

Exterior Features	Lawn
-------------------	------

Listing Details

Listing Office	RE/MAX P.A. Realty
----------------	--------------------



The trademarks MLS®, Multiple Listing Service® and the associated logos are owned by The Canadian Real Estate Association (CREA) and identify the quality of services provided by real estate professionals who are members of CREA. REALTOR®. Member of CREA and more.

Listing information last updated on October 13th, 2025 at 8:16am PDT