

# \$385,000 - 9 275 Alpine Crescent, Swift Current

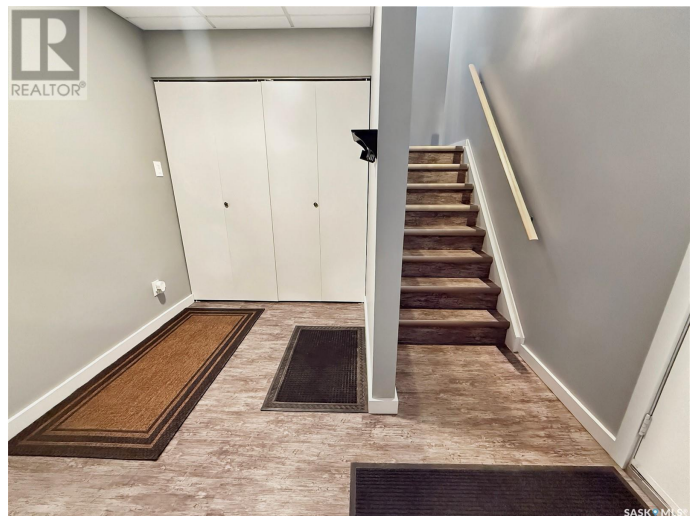
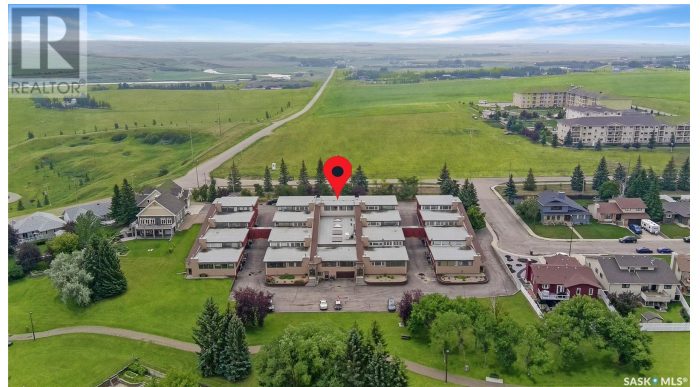
MLS® #SK013600

**\$385,000**

1 Bedroom, 3.00 Bathroom, 1,275 sqft  
Single Family

South East SC, Swift Current, Saskatchewan

Experience the luxurious lifestyle of this exquisite condo in the desirable Alpine Village community, located on the southern edge of the city. This unit offers stunning views of the prairies to the south and the city skyline to the north, along with a convenient two-car attached garage for easy access. Entering the basement, you'll find direct access to the insulated garage, a welcoming porch area, and a spacious, fully renovated recreational room with a stylish wet bar. The hallway leads to the mechanical room, equipped with an energy-efficient furnace, central vacuum system, ample storage, and a fully remodeled three-piece bathroom. Ascend the staircase to an inviting open-concept living space. The expansive front living room features breathtaking views of the skyline and includes a cozy nook for a private office. The large living/dining area seamlessly connects to a brand-new custom kitchen, a chef's dream with modern white cabinetry, elegant stone countertops, a built-in wine rack, oven and microwave, stovetop with retractable hood fan, garburator, trash compactor, and stainless steel appliances. A built-in window seat offers a perfect spot to enjoy the picturesque south prairie views. Down the hall, the oversized master bedroom includes a spacious built-in closet and convenient access to the laundry room. The luxurious bathroom, accessible from the master suite, features a beautifully tiled walk-in shower, standalone tub, double vanities, and a pocket door for guest access to



a separate toilet and sink. Professionally remodeled from top to bottom, this unit includes new flooring, baseboards, doors, pot lights, and two renovated bathrooms. Residents enjoy shared amenities just steps away, including a pool, sauna, hot tub, and communal room, along with maintenance services for lawn care and snow removal. Embrace the beauty of your surroundings and the exceptional amenities this property offers. Schedule your personal showing today to explore this remarkable home (id:6289)

Built in 1983

**Essential Information**

Listing #	SK013600
Price	\$385,000
Bedrooms	1
Bathrooms	3.00
Square Footage	1,275
Year Built	1983
Type	Single Family
Sub-Type	Condominium/Strata

**Community Information**

Address	9 275 Alpine Crescent
Subdivision	South East SC
City	Swift Current
Province	Saskatchewan
Postal Code	S9H4Y8

**Amenities**

Amenities	Swimming, Sauna
Features	Treed
Parking	Attached Garage, Other, Parking Space(s)
# of Garages	1
Has Pool	Yes
Pool	Indoor pool

**Interior**

Appliances	Washer, Refrigerator, Intercom, Dishwasher, Dryer, Microwave, Garburator, Oven - Built-In, Window Coverings, Garage door opener remote(s), Hood Fan, Stove
Heating	Natural gas Forced air
Cooling	Central air conditioning
Fireplace	Yes
Fireplaces	Wood

## Exterior

Exterior Features    Lawn

## Listing Details

Listing Office        RE/MAX of Swift Current



The trademarks MLS®, Multiple Listing Service® and the associated logos are owned by The Canadian Real Estate Association (CREA) and identify the quality of services provided by real estate professionals who are members of CREA. REALTOR®. Member of CREA and more.

Listing information last updated on October 14th, 2025 at 7:31am PDT