

\$2,999,999 - 150 Essa Road, Barrie (allandale)

MLS® #S6814522

\$2,999,999

3 Bedroom, 4.00 Bathroom,
Single Family on 0.00 Acres

Allandale, Barrie (allandale), Ontario

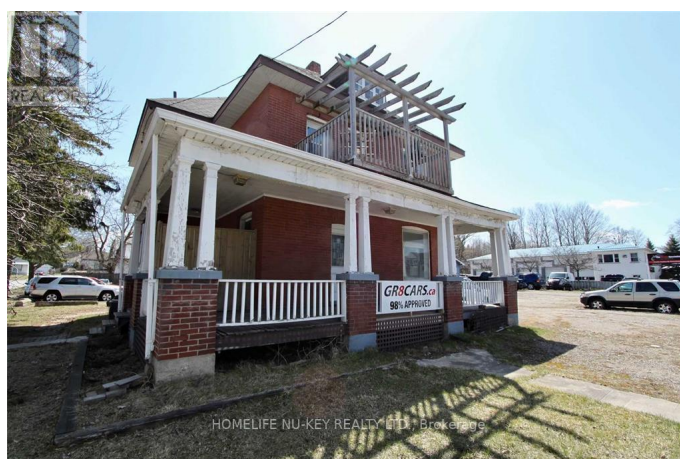
Development Opportunity for up to 12 story -120 unit residential building or possible commercial building. Prime corner location. Re-zoned urban transition as per City of Barrie's new OP and zoning bylaw. Across from mega-use development. Positive pre-consultation completed with City. Possibility to go taller for purpose rental building. Walking distance to GO train, waterfront, parks, church, schools, shopping & HWY 400, public transportation at door front. VTB considered. (id:6289)

Essential Information

| | |
|------------|---------------|
| Listing # | S6814522 |
| Price | \$2,999,999 |
| Bedrooms | 3 |
| Bathrooms | 4.00 |
| Half Baths | 2 |
| Acres | 0.00 |
| Type | Single Family |
| Sub-Type | Freehold |

Community Information

| | |
|-------------|--------------------|
| Address | 150 Essa Road |
| Subdivision | Allandale |
| City | Barrie (allandale) |
| Province | Ontario |
| Postal Code | L4N3L1 |



Amenities

Parking Spaces 52

Interior

Heating Natural gas Forced air
of Stories 2
Basement Apartment in basement

Exterior

Exterior Brick
Lot Description 143 x 149 FT ; Irregular
Foundation Concrete

Listing Details

Listing Office HOMELIFE NU-KEY REALTY LTD.



The trademarks MLS®, Multiple Listing Service® and the associated logos are owned by The Canadian Real Estate Association (CREA) and identify the quality of services provided by real estate professionals who are members of CREA. REALTOR®. Member of CREA and more.

Listing information last updated on October 12th, 2025 at 6:46pm PDT