

\$2,999,999 - 150 Essa Road, Barrie (allandale)

MLS® #S6711932

\$2,999,999

0 Bedroom, 0.00 Bathroom, 2,000 sqft

Retail on 0.00 Acres

Allandale, Barrie (allandale), Ontario

Development Opportunity for up to 12 story -120 unit residential building or possible commercial building. Prime corner location. Re-zoned urban transition as per City of Barrie's new OP and zoning bylaw. Across from mega-use development. Positive pre-consultation completed with City. Possibility to go taller for purpose rental building. Walking distance to GO train, waterfront, parks, church, schools, shopping & HWY 400, public transportation at door front. VTB considered. (id:6289)

Essential Information

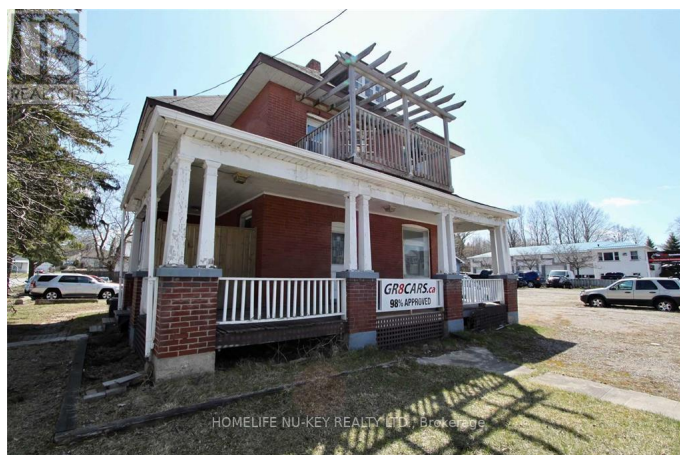
Listing #	S6711932
Price	\$2,999,999
Bathrooms	0.00
Square Footage	2,000
Acres	0.00
Type	Retail

Community Information

Address	150 Essa Road
Subdivision	Allandale
City	Barrie (allandale)
Province	Ontario
Postal Code	L4N3L1

Amenities

Amenities	Highway, Public Transit
-----------	-------------------------



Interior

Heating Natural gas Other

Exterior

Lot Description 143 x 149 FT ; Irregular

Listing Details

Listing Office HOMELIFE NU-KEY REALTY LTD.



The trademarks MLS®, Multiple Listing Service® and the associated logos are owned by The Canadian Real Estate Association (CREA) and identify the quality of services provided by real estate professionals who are members of CREA. REALTOR®. Member of CREA and more.

Listing information last updated on October 12th, 2025 at 9:16pm PDT