

\$999,000 - 3027 Monarch Drive, Orillia

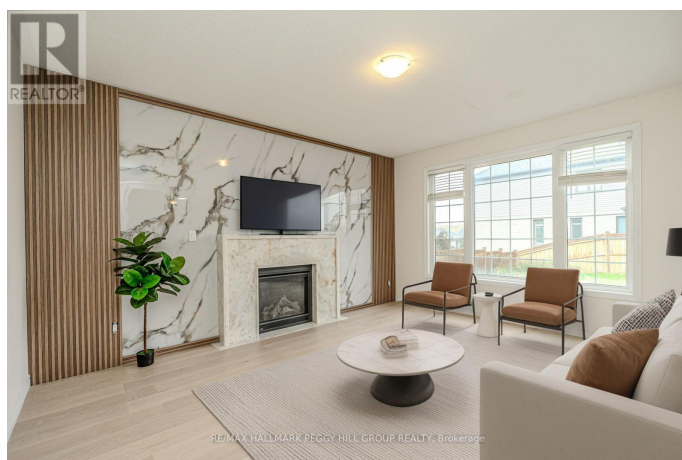
MLS® #S12456416

\$999,000

4 Bedroom, 4.00 Bathroom,
Single Family on 0.00 Acres

Orillia, Orillia, Ontario

IMPRESSIVE 2-STOREY WITH 2,752 SQ FT, QUALITY FINISHES, WALKABLE LOCATION & ROOM TO GROW! Situated in Orillias desirable West Ridge neighbourhood, this exceptional 2-storey built by Dreamland Homes showcases quality craftsmanship, modern design, and thoughtful details. Set on a corner lot, the all-brick exterior features stylish stone accents, double entry doors, a covered front porch, a decorative walkway, and a double garage with inside entry. Offering 2,752 square feet of bright, open-concept living, the interior is filled with natural light, elegant finishes, and a refined sense of style. The formal dining room provides a beautiful space for entertaining, while the den offers flexibility as a home office or playroom. The showstopping kitchen impresses with a massive waterfall island that seats ten, quartz counters, a farmhouse sink, stainless steel appliances, and rich wood cabinetry, flowing seamlessly into the living room where a floor-to-ceiling feature wall, warm wood accents, and a gas fireplace create a stunning focal point. Upstairs, the spacious layout continues with four generous bedrooms, including a primary suite with two walk-in closets and a spa-inspired five-piece ensuite featuring a water closet, dual vanity with vessel sinks, and a soaker tub. The second bedroom features its own four-piece ensuite and walk-in closet, while the remaining two bedrooms share a well-appointed four-piece bathroom with direct access from each room.



The upper-level laundry room adds practicality with cabinetry, a sink, and a folding counter. An unfinished basement offers the opportunity to design additional living space to suit your family's needs. The fenced yard provides room to relax outdoors, while this sought-after location is surrounded by schools, parks, and trails, and is within walking distance to Lakehead University, Costco, Walmart, Zehrs, Home Depot, Food Basics, Tim Hortons, Starbucks, a movie theatre & more. (id:6289)

Essential Information

Listing #	S12456416
Price	\$999,000
Bedrooms	4
Bathrooms	4.00
Half Baths	1
Acres	0.00
Type	Single Family
Sub-Type	Freehold

Community Information

Address	3027 Monarch Drive
Subdivision	Orillia
City	Orillia
Province	Ontario
Postal Code	L3V8K3

Amenities

Amenities	Schools, Park, Hospital, Fireplace(s)
Features	Irregular lot size
Parking Spaces	6
Parking	Attached Garage, Garage
# of Garages	2

Interior

Appliances	Dryer, Stove, Washer, Refrigerator
Heating	Natural gas Forced air

Cooling	Central air conditioning
Fireplace	Yes
# of Fireplaces	1
# of Stories	2

Exterior

Exterior	Brick
Lot Description	68.2 x 90.8 FT ; 34.83x090.76x57.96x115.38x33.40ft under 1/2 acre
Foundation	Poured Concrete

Listing Details

Listing Office RE/MAX HALLMARK PEGGY HILL GROUP REALTY



The trademarks MLS®, Multiple Listing Service® and the associated logos are owned by The Canadian Real Estate Association (CREA) and identify the quality of services provided by real estate professionals who are members of CREA. REALTOR®. Member of CREA and more.

Listing information last updated on October 12th, 2025 at 11:16pm PDT