

\$759,000 - 17 Bertram Drive, Springwater (elmvale)

MLS® #S12449246

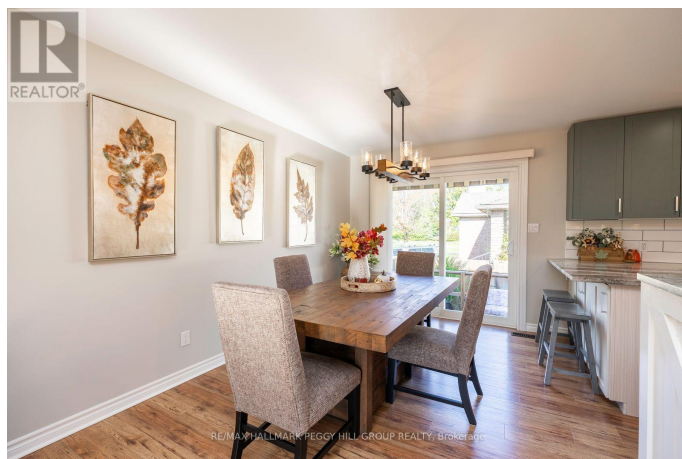
\$759,000

3 Bedroom, 2.00 Bathroom,
Single Family on 0.00 Acres

Elmvale, Springwater (elmvale), Ontario

SMALL-TOWN LIVING WITH BIG UPGRADES & IN-LAW SUITE POTENTIAL!

Set on a desirable corner lot, this raised bungalow catches the eye with its timeless all-brick exterior, recently updated Garaga garage doors, upgraded windows, and a stamped concrete walkway leading to a newer front door with sidelights that create an inviting entrance. The breezeway connecting the garage to the home is a standout feature, boasting updated sliding doors at both ends, a cozy seating area, and direct access to the basement. The backyard feels like your own getaway, complete with a hot tub, updated deck, stamped concrete walkway and patio, colourful gardens, and a fenced yard, ready for both entertaining and quiet evenings. The kitchen is bright and stylish, featuring white shaker cabinets, quartz counters, a subway tile backsplash, a large center island, and updated stainless steel appliances, including a stove with a built-in air fryer, which flows into an open dining and living area filled with natural light and a walkout to the deck. The main level has been refreshed with updated flooring, interior doors, fresh paint, a newer washer and dryer, and an updated bathroom. The versatile walk-up basement is designed for extended family living, complete with its own kitchen, a spacious rec room with a gas fireplace, a bedroom, and a 4-piece bath. All of this is within walking distance of elementary and secondary schools, parks, a grocery store, an LCBO, restaurants, an excellent local bakery,



and more. A move-in ready #HomeToStay with plenty of updates, versatile living spaces, and the ease of small-town living with everything you need just steps away! (id:6289)

Essential Information

Listing #	S12449246
Price	\$759,000
Bedrooms	3
Bathrooms	2.00
Acres	0.00
Type	Single Family
Sub-Type	Freehold
Style	Raised bungalow

Community Information

Address	17 Bertram Drive
Subdivision	Elmvale
City	Springwater (elmvale)
Province	Ontario
Postal Code	L0L1P0

Amenities

Amenities	Park, Place of Worship, Schools, Golf Nearby, Fireplace(s)
Utilities	Cable, Electricity, Wireless, Natural Gas Available, Telephone, Sewer
Features	Irregular lot size, Flat site, Lighting, Sump Pump
Parking Spaces	6
Parking	Attached Garage, Garage
# of Garages	2

Interior

Appliances	Hot Tub, Garage door opener remote(s), Central Vacuum, Water softener, Dishwasher, Dryer, Freezer, Garage door opener, Stove, Washer, Refrigerator
Heating	Natural gas Forced air
Cooling	Central air conditioning
Fireplace	Yes
# of Fireplaces	1

# of Stories	1
Has Basement	Yes
Basement	Separate entrance

Exterior

Exterior	Brick
Exterior Features	Landscaped
Lot Description	40.8 x 100 FT ; See Remarks. under 1/2 acre
Foundation	Block

Listing Details

Listing Office	RE/MAX HALLMARK PEGGY HILL GROUP REALTY
----------------	---



The trademarks MLS®, Multiple Listing Service® and the associated logos are owned by The Canadian Real Estate Association (CREA) and identify the quality of services provided by real estate professionals who are members of CREA. REALTOR®. Member of CREA and more.

Listing information last updated on October 15th, 2025 at 12:01pm PDT