

\$669,900 - 104 - 10 Museum Drive, Orillia

MLS® #S12343894

\$669,900

2 Bedroom, 3.00 Bathroom,
Single Family

Orillia, Orillia, Ontario

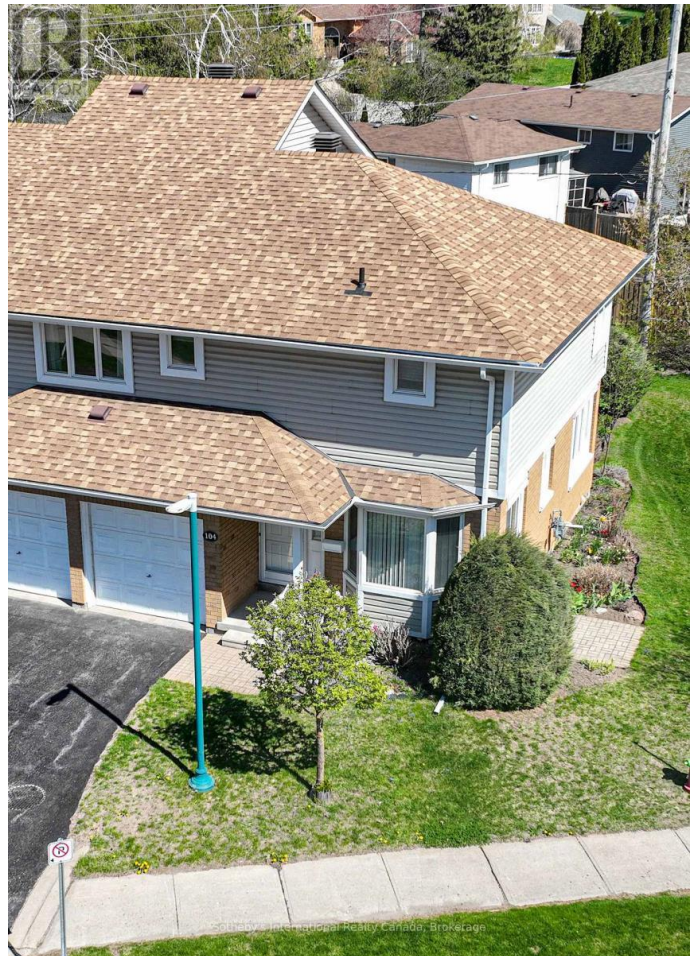
Large townhome in sought after retirement community (Villages of Leacock) this bright end unit features a main level breakfast area with walkout, open concept living/dining with two story ceiling, and walkout to a private back patio, and a two piece guest bath. Upstairs are two large Primary suites each with an ensuite bath and plenty of closet space and a convenient desk nook located in the landing. also of note is a recently installed elevator from the main floor to the second floor allowing accessible access to the bedrooms, and the double car garage currently has ramp access to the inside entry as well. The full basement is currently unfinished and provides storage and utility spaces. This building features one of the most private backyard locations in the development and the only one with two-car garages! (id:6289)

Essential Information

Listing #	S12343894
Price	\$669,900
Bedrooms	2
Bathrooms	3.00
Half Baths	1
Type	Single Family
Sub-Type	Condominium/Strata

Community Information

Address 104 - 10 Museum Drive



Subdivision	Orillia
City	Orillia
Province	Ontario
Postal Code	L3V7T9

Amenities

Utilities	Wireless
Features	Wheelchair access, In suite Laundry
Parking Spaces	4
Parking	Attached Garage, Garage, Inside Entry
# of Garages	2

Interior

Appliances	Central Vacuum, Water meter, Dishwasher, Dryer, Stove, Washer, Refrigerator
Heating	Natural gas Forced air
Cooling	Central air conditioning
# of Stories	2

Exterior

Exterior	Brick Facing
Foundation	Concrete

Listing Details

Listing Office	Sotheby's International Realty Canada
----------------	---------------------------------------



The trademarks MLS®, Multiple Listing Service® and the associated logos are owned by The Canadian Real Estate Association (CREA) and identify the quality of services provided by real estate professionals who are members of CREA. REALTOR®. Member of CREA and more.

Listing information last updated on October 12th, 2025 at 11:31pm PDT