

# \$ - 100 - 19 Front Street N, Orillia

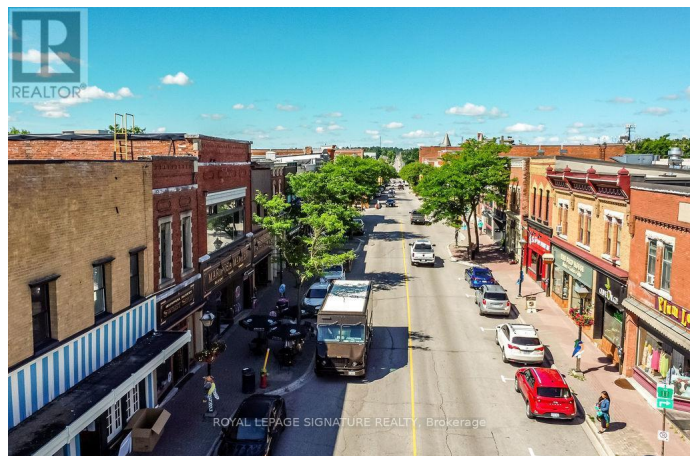
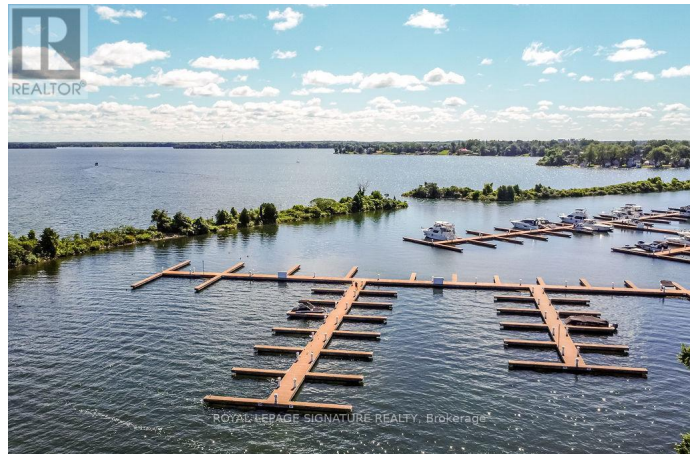
MLS® #S12327409

\$

0 Bedroom, 0.00 Bathroom, 6,168 sqft  
Office on 138.63 Acres

Orillia, Orillia, Ontario

Discover a prestigious leasing opportunity in the heart of downtown Orillia. This impressive main-floor office suite offers 6168 sq. ft. of well-appointed space, The suite is move-in ready, providing a turnkey solution for your business needs. Additional rent (TMI) is estimated at \$15.00 per sq. ft. The building ensures accessibility with wheelchair-friendly features and offers guaranteed parking for 12 vehicles during the summer months and 11 in winter, plus five additional visitor parking spaces. Rent does not include: Rent does not include in suite janitorial, internet/communications, or management fees. Zoned for a variety of uses, permissible options include professional office, school, childcare facility, fitness centre, or restaurant. Seize the opportunity to secure your place in one of Orillia's most desirable locations. A total of over approx. 8,000 sq. ft. is available-enquire today to elevate your business presence in this sought-after property. (id:6289)



## Essential Information

Listing #	S12327409
Bathrooms	0.00
Square Footage	6,168
Acres	138.63
Type	Office

## Community Information

Address	100 - 19 Front Street N
Subdivision	Orillia
City	Orillia
Province	Ontario
Postal Code	L3V4R6

### **Amenities**

Features	Irregular lot size, Elevator
----------	------------------------------

### **Interior**

Heating	Natural gas Forced air
Cooling	Fully air conditioned

### **Listing Details**

Listing Office	ROYAL LEPAGE SIGNATURE REALTY
----------------	-------------------------------



The trademarks MLS®, Multiple Listing Service® and the associated logos are owned by The Canadian Real Estate Association (CREA) and identify the quality of services provided by real estate professionals who are members of CREA. REALTOR®. Member of CREA and more.

Listing information last updated on October 13th, 2025 at 3:16am PDT