

\$1,199,000 - 66 6245 Sheridan Road, Richmond

MLS® #R3057632

\$1,199,000

3 Bedroom, 2.00 Bathroom, 1,402 sqft
Single Family

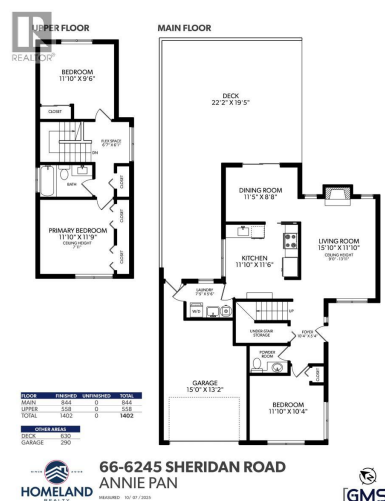
N/A, Richmond, British Columbia

Maple Tree Lane - a 3 bedroom, fully detached townhouse. Completely renovated inside & out, this home has 2 bedrooms upstairs and 1 bedroom on the ground floor - perfect for extended family. Vaulted ceilings in the living & dining room with a wood-burning fireplace & elegant lighting gives you a grand feeling. Separate laundry room with full-sized washer and dryer & laundry sink. Plenty of storage in the attic above the attached one-car garage. Outside you'll enjoy a huge lot with mature landscaping & two decks totalling 900 sq. ft. This neighbourhood enjoys plenty of green space, has a tennis court & is within walking distance to Broadmoor. Steveston-London & Errington catchments. Everything you'd expect in a house at a townhouse price. Come take a look, you'll be pleasantly surprised. (id:6289)

Built in 1978

Essential Information

Listing #	R3057632
Price	\$1,199,000
Bedrooms	3
Bathrooms	2.00
Square Footage	1,402
Year Built	1978
Type	Single Family
Sub-Type	Strata



Style 2 Level

Community Information

Address 66 6245 Sheridan Road
Subdivision N/A
City Richmond
Province British Columbia
Postal Code V7E4W5

Amenities

Amenities Playground, Recreation, Shopping, Laundry - In Suite
Parking Spaces 2
Parking Garage, Visitor Parking
of Garages 1

Interior

Interior Features Drapes/Window coverings
Appliances All, Central Vacuum
Heating Electric

Listing Details

Listing Office Homeland Realty



The trademarks MLS®, Multiple Listing Service® and the associated logos are owned by The Canadian Real Estate Association (CREA) and identify the quality of services provided by real estate professionals who are members of CREA. REALTOR®. Member of CREA and more.

Listing information last updated on October 13th, 2025 at 8:32am PDT